



[Go to Product page](#)

Datasheet for ABIN6738544  
**anti-TEX2 antibody (AA 193-242)**

1 Image

Overview

Quantity:	100 µL
Target:	TEX2
Binding Specificity:	AA 193-242
Reactivity:	Human, Mouse, Cow, Dog, Guinea Pig, Rabbit, Rat, Hamster, Monkey, Pig
Host:	Rabbit
Clonality:	Polyclonal
Conjugate:	This TEX2 antibody is un-conjugated
Application:	Western Blotting (WB)

Product Details

Immunogen:	Synthetic peptide located between aa193-242 of human TEX2 (Q8IWB9, NP_060939). Percent identity by BLAST analysis: Human, Chimpanzee, Gorilla, Monkey, Galago, Marmoset, Mouse, Rat, Hamster, Elephant, Dog, Bovine, Rabbit, Pig, Guinea pig (100%), Gibbon, Bat, Platypus (92%), Chicken (90%), Opossum (85%), Turkey, Zebra finch (84%).  Type of Immunogen: Synthetic peptide
Isotype:	IgG
Specificity:	Human TEX2
Predicted Reactivity:	Percent identity by BLAST analysis: Human, Mouse, Rat, Dog, Bovine, Rabbit, Pig (100%) Chicken (90%).
Purification:	Immunoaffinity purified

## Target Details

---

Target:	TEX2
Alternative Name:	TEX2 ( <a href="#">TEX2 Products</a> )
Background:	Name/Gene ID: TEX2  Synonyms: TEX2, KIAA1738, Transmembrane protein 96, Testis expressed sequence 2, TMEM96, Testis expressed 2, HT008
Gene ID:	55852
NCBI Accession:	<a href="#">NP_060939</a>
UniProt:	<a href="#">Q8IWB9</a>

## Application Details

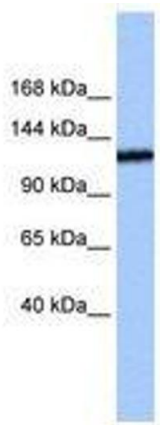
---

Application Notes:	Approved: WB  Usage: ELISA titer using peptide based assay: 1:1562500. Western Blot: Suggested dilution at 0.5 µg/mL in 5 % skim milk / PBS buffer, and HRP conjugated anti-Rabbit IgG should be diluted in 1:50000 - 100000 as second antibody.
Comment:	Target Species of Antibody: Human
Restrictions:	For Research Use only

## Handling

---

Format:	Lyophilized
Reconstitution:	Distilled Water.
Concentration:	Lot specific
Buffer:	Lyophilized from PBS with 2 % sucrose
Handling Advice:	Avoid repeat freeze-thaw cycles.
Storage:	4 °C,-20 °C
Storage Comment:	Long term: -20°C, the use of 50% glycerol is recommended if storing aliquots in -20°C for long term use (up to 1 year)  Short term (less than 1 week): 4°C. Avoid freeze-thaw cycles.



**Image 1.**