



[Go to Product page](#)

Datasheet for ABIN6738545  
**anti-TMEM126B antibody (AA 32-81)**

1 Image

Overview

Quantity:	100 µL
Target:	TMEM126B
Binding Specificity:	AA 32-81
Reactivity:	Human, Dog
Host:	Rabbit
Clonality:	Polyclonal
Conjugate:	This TMEM126B antibody is un-conjugated
Application:	Western Blotting (WB)

Product Details

Immunogen:	Synthetic peptide located between aa32-81 of human TMEM126B (Q8IU1, NP_060950). Percent identity by BLAST analysis: Human, Gorilla, Gibbon, Monkey (100%), Marmoset (92%), Dog (85%).  Type of Immunogen: Synthetic peptide
Isotype:	IgG
Specificity:	Human TMEM126B
Predicted Reactivity:	Percent identity by BLAST analysis: Human (100%) Dog (85%).
Purification:	Immunoaffinity purified

## Target Details

---

Target: TMEM126B

Alternative Name: TMEM126B ([TMEM126B Products](#))

Background: Name/Gene ID: TMEM126B

Synonyms: TMEM126B, HT007, Transmembrane protein 126B

Gene ID: 55863

NCBI Accession: [NP\\_060950](#)

UniProt: [Q8IUX1](#)

## Application Details

---

Application Notes: Approved: WB

Usage: ELISA titer using peptide based assay: 1:62500. Western Blot: Suggested dilution at 1  $\mu$ g/mL in 5 % skim milk / PBS buffer, and HRP conjugated anti-Rabbit IgG should be diluted in 1:50000 - 100000 as second antibody.

Comment: Target Species of Antibody: Human

Restrictions: For Research Use only

## Handling

---

Format: Lyophilized

Reconstitution: Distilled Water.

Concentration: Lot specific

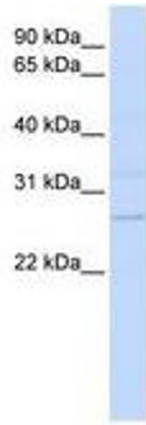
Buffer: Lyophilized from PBS with 2 % sucrose

Handling Advice: Avoid repeat freeze-thaw cycles.

Storage: 4 °C, -20 °C

Storage Comment: Long term: -20°C, the use of 50% glycerol is recommended if storing aliquots in -20°C for long term use (up to 1 year)

Short term (less than 1 week): 4°C. Avoid freeze-thaw cycles.



**Image 1.**