



[Go to Product page](#)

Datasheet for ABIN6738552

anti-PCDHGB1 antibody (AA 182-231)

1 Image

Overview

Quantity:	100 µL
Target:	PCDHGB1
Binding Specificity:	AA 182-231
Reactivity:	Human, Rabbit
Host:	Rabbit
Clonality:	Polyclonal
Conjugate:	This PCDHGB1 antibody is un-conjugated
Application:	Western Blotting (WB)

Product Details

Immunogen:	Synthetic peptide located between aa182-231 of human PCDHGB1 (Q3SY75, NP_115266). Percent identity by BLAST analysis: Human, Chimpanzee, Gorilla, Rabbit (100%), Mouse, Platypus (92%), Opossum (91%), Guinea pig (90%), Rat, Lizard, Xenopus (84%), Gibbon, Marmoset, Bovine, Horse (83%). Type of Immunogen: Synthetic peptide
Isotype:	IgG
Specificity:	Human PCDHGB1
Predicted Reactivity:	Percent identity by BLAST analysis: Human, Rabbit (100%) Mouse (92%).
Purification:	Immunoaffinity purified

Target Details

Target:	PCDHGB1
Alternative Name:	PCDHGB1 (PCDHGB1 Products)
Background:	Name/Gene ID: PCDHGB1 Family: Cadherin Synonyms: PCDHGB1, PCDH-GAMMA-B1, Protocadherin gamma-B1
Gene ID:	56104
NCBI Accession:	NP_115266
UniProt:	Q9Y5G3

Application Details

Application Notes:	Approved: WB Usage: ELISA titer using peptide based assay: 1:62500. Western Blot: Suggested dilution at 1 μ g/mL in 5 % skim milk / PBS buffer, and HRP conjugated anti-Rabbit IgG should be diluted in 1:50000 - 100000 as second antibody.
Comment:	Target Species of Antibody: Human
Restrictions:	For Research Use only

Handling

Format:	Lyophilized
Reconstitution:	Distilled Water.
Concentration:	Lot specific
Buffer:	Lyophilized from PBS with 2 % sucrose
Handling Advice:	Avoid repeat freeze-thaw cycles.
Storage:	4 °C,-20 °C
Storage Comment:	Long term: -20°C, the use of 50% glycerol is recommended if storing aliquots in -20°C for long term use (up to 1 year) Short term (less than 1 week): 4°C. Avoid freeze-thaw cycles.

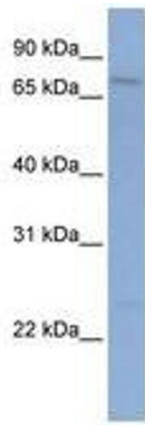


Image 1.