



Datasheet for ABIN6738553  
**anti-PCDHGC4 antibody (AA 182-231)**



[Go to Product page](#)

1 Image

Overview

Quantity:	100 µL
Target:	PCDHGC4
Binding Specificity:	AA 182-231
Reactivity:	Human, Rat, Mouse, Zebrafish (Danio rerio), Horse, Bat, Monkey
Host:	Rabbit
Clonality:	Polyclonal
Conjugate:	This PCDHGC4 antibody is un-conjugated
Application:	Western Blotting (WB)

Product Details

Immunogen:	Synthetic peptide located between aa182-231 of human PCDHGC4 (Q9Y5F7, NP_061751). Percent identity by BLAST analysis: Human, Chimpanzee, Gorilla, Gibbon, Monkey, Marmoset, Mouse, Rat, Elephant, Bat, Horse, Opossum, Zebrafish (100%).  Type of Immunogen: Synthetic peptide
Isotype:	IgG
Specificity:	Human PCDHGC4
Predicted Reactivity:	Percent identity by BLAST analysis: Human, Mouse (100%).
Purification:	Immunoaffinity purified

## Target Details

---

Target:	PCDHGC4
Alternative Name:	PCDHGC4 ( <a href="#">PCDHGC4 Products</a> )
Background:	Name/Gene ID: PCDHGC4 Family: Cadherin  Synonyms: PCDHGC4, PCDH-GAMMA-C4, Protocadherin gamma-C4
Gene ID:	56098
NCBI Accession:	<a href="#">NP_061751</a>
UniProt:	<a href="#">Q9Y5F7</a>

## Application Details

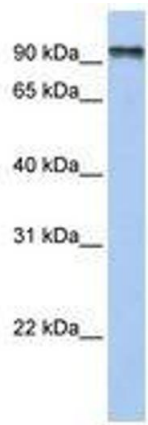
---

Application Notes:	Approved: WB  Usage: ELISA titer using peptide based assay: 1:1562500. Western Blot: Suggested dilution at 1 µg/mL in 5 % skim milk / PBS buffer, and HRP conjugated anti-Rabbit IgG should be diluted in 1:50000 - 100000 as second antibody.
Comment:	Target Species of Antibody: Human
Restrictions:	For Research Use only

## Handling

---

Format:	Lyophilized
Reconstitution:	Distilled Water.
Concentration:	Lot specific
Buffer:	Lyophilized from PBS with 2 % sucrose
Handling Advice:	Avoid repeat freeze-thaw cycles.
Storage:	4 °C,-20 °C
Storage Comment:	Long term: -20°C, the use of 50% glycerol is recommended if storing aliquots in -20°C for long term use (up to 1 year) Short term (less than 1 week): 4°C. Avoid freeze-thaw cycles.



**Image 1.**