



[Go to Product page](#)

Datasheet for ABIN6738570
anti-DOLPP1 antibody (N-Term)

1 Image

Overview

Quantity:	100 µL
Target:	DOLPP1
Binding Specificity:	N-Term
Reactivity:	Mouse, Rat, Human, Zebrafish (Danio rerio), Cow, Guinea Pig, Horse, Bat, Monkey, Pig, Xenopus laevis
Host:	Rabbit
Clonality:	Polyclonal
Conjugate:	This DOLPP1 antibody is un-conjugated
Application:	Western Blotting (WB)

Product Details

Immunogen:	Synthetic peptide from N-Terminus of human DOLPP1 (Q86YN1, NP_065171). Percent identity by BLAST analysis: Human, Chimpanzee, Gorilla, Gibbon, Baboon, Monkey, Galago, Marmoset, Mouse, Rat, Elephant, Bovine, Bat, Horse, Pig, Opossum, Guinea pig, Armadillo, Xenopus (100%), Hamster, Panda, Dog, Platypus (92%), Turkey, Chicken, Zebrafish (85%). Type of Immunogen: Synthetic peptide
Isotype:	IgG
Specificity:	Human DOLPP1
Predicted Reactivity:	Percent identity by BLAST analysis: Mouse, Rat, Bovine, Guinea pig, Xenopus (100%) Dog (92%) Chicken, Zebrafish (85%).

Product Details

Purification: Immunoaffinity purified

Target Details

Target: DOLPP1

Alternative Name: DOLPP1 ([DOLPP1 Products](#))

Background: Name/Gene ID: DOLPP1

Synonyms: DOLPP1, Dolichyldiphosphatase 1, LSRF2

Gene ID: 57171

NCBI Accession: [NP_065171](#)

UniProt: [Q86YN1](#)

Application Details

Application Notes: Approved: WB

Usage: ELISA titer using peptide based assay: 1:312500. Western Blot: Suggested dilution at 1 μ g/mL in 5 % skim milk / PBS buffer, and HRP conjugated anti-Rabbit IgG should be diluted in 1:50000 - 100000 as second antibody.

Comment: Target Species of Antibody: Human

Restrictions: For Research Use only

Handling

Format: Lyophilized

Reconstitution: Distilled Water.

Concentration: Lot specific

Buffer: Lyophilized from PBS with 2 % sucrose

Handling Advice: Avoid repeat freeze-thaw cycles.

Storage: 4 °C, -20 °C

Storage Comment: Long term: -20°C, the use of 50% glycerol is recommended if storing aliquots in -20°C for long term use (up to 1 year)

Handling

Short term (less than 1 week): 4°C. Avoid freeze-thaw cycles.

Images

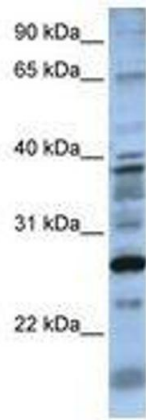


Image 1.