



Datasheet for ABIN6738574
anti-GALNTL1 antibody (AA 74-123)



[Go to Product page](#)

1 Image

Overview

Quantity:	100 µL
Target:	GALNTL1
Binding Specificity:	AA 74-123
Reactivity:	Human, Rat, Rabbit, Cow, Guinea Pig, Horse, Monkey
Host:	Rabbit
Clonality:	Polyclonal
Conjugate:	This GALNTL1 antibody is un-conjugated
Application:	Western Blotting (WB)

Product Details

Immunogen:	Synthetic peptide located between aa74-123 of human GALNT16 (Q8N428, NP_065743). Percent identity by BLAST analysis: Human, Chimpanzee, Gorilla, Gibbon, Monkey, Galago, Marmoset, Rat, Elephant, Bovine, Rabbit, Horse, Guinea pig (100%), Mouse, Dog, Opossum, Turkey, Zebra finch, Chicken (92%), Bat, Platypus, Xenopus (85%). Type of Immunogen: Synthetic peptide
Isotype:	IgG
Specificity:	Human GALNTL1
Predicted Reactivity:	Percent identity by BLAST analysis: Human, Rat, Bovine, Rabbit, Horse, Guinea pig (100%) Mouse, Dog, Chicken (92%) Xenopus (85%).
Purification:	Immunoaffinity purified

Target Details

Target:	GALNTL1
Alternative Name:	GALNT16 / GALNTL1 (GALNTL1 Products)
Background:	Name/Gene ID: GALNT16 Synonyms: GALNT16, GALNTL1, GALNACT16, Pp-GaNTase-like protein 1, KIAA1130, GalNAc-T-like protein 1
Gene ID:	57452
NCBI Accession:	NP_065743
UniProt:	Q8N428

Application Details

Application Notes:	Approved: WB Usage: ELISA titer using peptide based assay: 1:62500. Western Blot: Suggested dilution at 1 μ g/mL in 5 % skim milk / PBS buffer, and HRP conjugated anti-Rabbit IgG should be diluted in 1:50000 - 100000 as second antibody.
Comment:	Target Species of Antibody: Human
Restrictions:	For Research Use only

Handling

Format:	Lyophilized
Reconstitution:	Distilled Water.
Concentration:	Lot specific
Buffer:	Lyophilized from PBS with 2 % sucrose
Handling Advice:	Avoid repeat freeze-thaw cycles.
Storage:	4 °C,-20 °C
Storage Comment:	Long term: -20°C, the use of 50% glycerol is recommended if storing aliquots in -20°C for long term use (up to 1 year) Short term (less than 1 week): 4°C. Avoid freeze-thaw cycles.

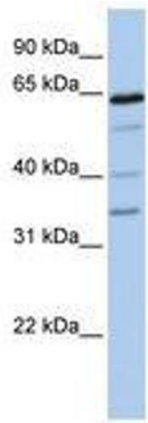


Image 1.