



[Go to Product page](#)

Datasheet for ABIN6738582

anti-CACHD1 antibody (AA 151-200)

1 Image

Overview

Quantity:	100 µL
Target:	CACHD1
Binding Specificity:	AA 151-200
Reactivity:	Human, Mouse, Rat, Cow, Guinea Pig, Horse, Rabbit, Bat, Monkey, Pig
Host:	Rabbit
Clonality:	Polyclonal
Conjugate:	This CACHD1 antibody is un-conjugated
Application:	Western Blotting (WB)

Product Details

Immunogen:	Synthetic peptide located between aa151-200 of human CACHD1 (Q5VU97, NP_065976). Percent identity by BLAST analysis: Human, Chimpanzee, Gorilla, Gibbon, Monkey, Galago, Marmoset, Mouse, Rat, Elephant, Bovine, Bat, Rabbit, Horse, Pig, Opossum, Guinea pig, Platypus (100%), Turkey, Zebra finch, Chicken (92%), Lizard, Xenopus (85%). Type of Immunogen: Synthetic peptide
Isotype:	IgG
Specificity:	Human CACHD1
Predicted Reactivity:	Percent identity by BLAST analysis: Rat, Bovine, Rabbit, Horse, Pig, Guinea pig (100%) Chicken (92%).
Purification:	Immunoaffinity purified

Target Details

Target:	CACHD1
Alternative Name:	CACHD1 (CACHD1 Products)
Background:	Name/Gene ID: CACHD1 Subfamily: Ion channel - provisional Family: Ion channel Synonyms: CACHD1, RP4-655E10.1, Cache domain containing 1, KIAA1573, VWCD1
Gene ID:	57685
NCBI Accession:	NP_065976
UniProt:	Q5VU97

Application Details

Application Notes:	Approved: WB Usage: ELISA titer using peptide based assay: 1:62500. Western Blot: Suggested dilution at 1 μ g/mL in 5 % skim milk / PBS buffer, and HRP conjugated anti-Rabbit IgG should be diluted in 1:50000 - 100000 as second antibody.
Comment:	Target Species of Antibody: Human
Restrictions:	For Research Use only

Handling

Format:	Lyophilized
Reconstitution:	Distilled Water.
Concentration:	Lot specific
Buffer:	Lyophilized from PBS with 2 % sucrose
Handling Advice:	Avoid repeat freeze-thaw cycles.
Storage:	4 °C, -20 °C
Storage Comment:	Long term: -20°C, the use of 50% glycerol is recommended if storing aliquots in -20°C for long term use (up to 1 year) Short term (less than 1 week): 4°C. Avoid freeze-thaw cycles.

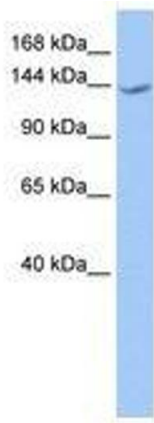


Image 1.