



[Go to Product page](#)

Datasheet for ABIN6738584
anti-B3GALT1 antibody (N-Term)

1 Image

Overview

Quantity:	100 µL
Target:	B3GALT1
Binding Specificity:	N-Term
Reactivity:	Human, Mouse, Rat, Cow, Guinea Pig, Rabbit, Hamster, Monkey, Pig
Host:	Rabbit
Clonality:	Polyclonal
Conjugate:	This B3GALT1 antibody is un-conjugated
Application:	Western Blotting (WB)

Product Details

Immunogen:	Synthetic peptide from N-Terminus of human B3GALT1 (Q9Y5Z6, NP_066191). Percent identity by BLAST analysis: Human, Chimpanzee, Gorilla, Orangutan, Gibbon, Monkey, Galago, Marmoset, Mouse, Rat, Hamster, Elephant, Panda, Bovine, Rabbit, Pig, Guinea pig (100%), Bat, Horse (92%), Platypus (83%). Type of Immunogen: Synthetic peptide
Isotype:	IgG
Specificity:	Human B3GALT1
Predicted Reactivity:	Percent identity by BLAST analysis: Mouse, Rat, Bovine, Rabbit, Pig (100%) Horse (92%).
Purification:	Immunoaffinity purified

Target Details

Target: B3GALT1

Alternative Name: B3GALT1 ([B3GALT1 Products](#))

Background: Name/Gene ID: B3GALT1

Synonyms: B3GALT1, Beta-3-galt1, Beta-1,3-GalTase 1, Beta3GalT1, Beta3Gal-T1

Gene ID: 8708

NCBI Accession: [NP_066191](#)

UniProt: [Q9Y5Z6](#)

Application Details

Application Notes: Approved: WB

Usage: ELISA titer using peptide based assay: 1:312500. Western Blot: Suggested dilution at 1 µg/mL in 5 % skim milk / PBS buffer, and HRP conjugated anti-Rabbit IgG should be diluted in 1:50000 - 100000 as second antibody.

Comment: Target Species of Antibody: Human

Restrictions: For Research Use only

Handling

Format: Lyophilized

Reconstitution: Distilled Water.

Concentration: Lot specific

Buffer: Lyophilized from PBS with 2 % sucrose

Handling Advice: Avoid repeat freeze-thaw cycles.

Storage: 4 °C, -20 °C

Storage Comment: Long term: -20°C, the use of 50% glycerol is recommended if storing aliquots in -20°C for long term use (up to 1 year)

Short term (less than 1 week): 4°C. Avoid freeze-thaw cycles.

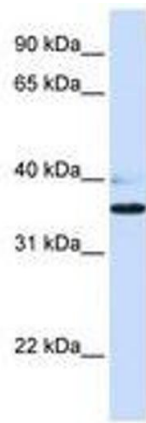


Image 1.