



[Go to Product page](#)

Datasheet for ABIN6738585
anti-B3GALT1 antibody (AA 252-301)

1 Image

Overview

Quantity:	100 µL
Target:	B3GALT1
Binding Specificity:	AA 252-301
Reactivity:	Human, Mouse, Rat, Cow, Guinea Pig, Rabbit, Dog, Horse, Hamster, Monkey, Pig, Bat, Chicken, Xenopus laevis
Host:	Rabbit
Clonality:	Polyclonal
Conjugate:	This B3GALT1 antibody is un-conjugated
Application:	Western Blotting (WB)

Product Details

Immunogen:	Synthetic peptide located between aa252-301 of human B3GALT1 (Q9Y5Z6, NP_066191). Percent identity by BLAST analysis: Human, Chimpanzee, Gorilla, Orangutan, Gibbon, Monkey, Galago, Marmoset, Mouse, Rat, Hamster, Elephant, Panda, Dog, Bovine, Bat, Rabbit, Horse, Pig, Opossum, Guinea pig, Turkey, Zebra finch, Chicken, Platypus, Lizard, Xenopus, Stickleback (100%), Zebrafish (92%). Type of Immunogen: Synthetic peptide
Isotype:	IgG
Specificity:	Human B3GALT1
Predicted Reactivity:	Percent identity by BLAST analysis: Mouse, Rat, Dog, Bovine, Rabbit, Horse, Pig, Chicken (100%).

Product Details

Purification: Immunoaffinity purified

Target Details

Target: B3GALT1

Alternative Name: B3GALT1 ([B3GALT1 Products](#))

Background: Name/Gene ID: B3GALT1

Synonyms: B3GALT1, Beta-3-galt1, Beta-1,3-GalTase 1, Beta3GalT1, Beta3Gal-T1

Gene ID: 8708

NCBI Accession: [NP_066191](#)

UniProt: [Q9Y5Z6](#)

Application Details

Application Notes: Approved: WB

Usage: ELISA titer using peptide based assay: 1:312500. Western Blot: Suggested dilution at 1 µg/mL in 5 % skim milk / PBS buffer, and HRP conjugated anti-Rabbit IgG should be diluted in 1:50000 - 100000 as second antibody.

Comment: Target Species of Antibody: Human

Restrictions: For Research Use only

Handling

Format: Lyophilized

Reconstitution: Distilled Water.

Concentration: Lot specific

Buffer: Lyophilized from PBS with 2 % sucrose

Handling Advice: Avoid repeat freeze-thaw cycles.

Storage: 4 °C,-20 °C

Storage Comment: Long term: -20°C, the use of 50% glycerol is recommended if storing aliquots in -20°C for long term use (up to 1 year)

Handling

Short term (less than 1 week): 4°C. Avoid freeze-thaw cycles.

Images

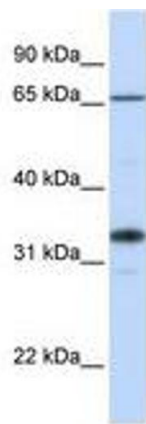


Image 1.