



Datasheet for ABIN6738588
anti-TMX4 antibody (C-Term)



[Go to Product page](#)

1 Image

Overview

Quantity:	100 µL
Target:	TMX4
Binding Specificity:	C-Term
Reactivity:	Human, Rat, Mouse, Monkey
Host:	Rabbit
Clonality:	Polyclonal
Conjugate:	This TMX4 antibody is un-conjugated
Application:	Western Blotting (WB)

Product Details

Immunogen:	Synthetic peptide from C-Terminus of human TMX4 (Q9H1E5, NP_066979). Percent identity by BLAST analysis: Human, Chimpanzee, Gorilla, Gibbon, Monkey, Marmoset, Rat (100%), Bovine, Bat, Horse (92%), Galago, Dog, Rabbit (85%), Elephant, Guinea pig (84%), Xenopus (81%), Mouse (78%). Type of Immunogen: Synthetic peptide
Isotype:	IgG
Specificity:	Human TMX4 / TXNDC13
Predicted Reactivity:	Percent identity by BLAST analysis: Human, Monkey, Rat (100%) Bovine (92%) Xenopus (81%).
Purification:	Immunoaffinity purified

Target Details

Target: TMX4

Alternative Name: TMX4 ([TMX4 Products](#))

Background: Name/Gene ID: TMX4

Synonyms: TMX4, KIAA1162, PDIA14, TXNDC13, DJ971N18.2

Gene ID: 56255

NCBI Accession: [NP_066979](#)

UniProt: [Q9H1E5](#)

Application Details

Application Notes: Approved: WB

Usage: ELISA titer using peptide based assay: 1:62500. Western Blot: Suggested dilution at 1 μ g/mL in 5 % skim milk / PBS buffer, and HRP conjugated anti-Rabbit IgG should be diluted in 1:50000 - 100000 as second antibody.

Comment: Target Species of Antibody: Human

Restrictions: For Research Use only

Handling

Format: Lyophilized

Reconstitution: Distilled Water.

Concentration: Lot specific

Buffer: Lyophilized from PBS with 2 % sucrose

Handling Advice: Avoid repeat freeze-thaw cycles.

Storage: 4 °C, -20 °C

Storage Comment: Long term: -20°C, the use of 50% glycerol is recommended if storing aliquots in -20°C for long term use (up to 1 year)

Short term (less than 1 week): 4°C. Avoid freeze-thaw cycles.

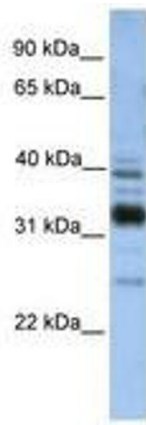


Image 1.