



[Go to Product page](#)

Datasheet for ABIN6738589

## anti-CATSPERG antibody (AA 928-977)

### 1 Image

#### Overview

Quantity:	100 µL
Target:	CATSPERG
Binding Specificity:	AA 928-977
Reactivity:	Human
Host:	Rabbit
Clonality:	Polyclonal
Conjugate:	This CATSPERG antibody is un-conjugated
Application:	Western Blotting (WB)

#### Product Details

Immunogen:	Synthetic peptide located between aa928-977 of human CATSPERG (Q6ZRH7, NP_067008). Percent identity by BLAST analysis: Human, Chimpanzee, Gorilla (100%), Gibbon (92%), Guinea pig (85%).  Type of Immunogen: Synthetic peptide
Isotype:	IgG
Specificity:	Human CATSPERG / C19orf15
Predicted Reactivity:	Percent identity by BLAST analysis: Human (100%).
Purification:	Immunoaffinity purified

## Target Details

---

Target:	CATSPERG
Alternative Name:	CATSPERG ( <a href="#">CATSPERG Products</a> )
Background:	Name/Gene ID: CATSPERG  Synonyms: CATSPERG, C19orf15
Gene ID:	57828
NCBI Accession:	<a href="#">NP_067008</a>
UniProt:	<a href="#">Q6ZRH7</a>

## Application Details

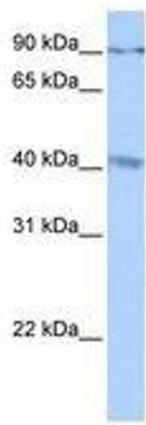
---

Application Notes:	Approved: WB  Usage: ELISA titer using peptide based assay: 1:312500. Western Blot: Suggested dilution at 0.5 µg/mL in 5 % skim milk / PBS buffer, and HRP conjugated anti-Rabbit IgG should be diluted in 1:50000 - 100000 as second antibody.
Comment:	Target Species of Antibody: Human
Restrictions:	For Research Use only

## Handling

---

Format:	Lyophilized
Reconstitution:	Distilled Water.
Concentration:	Lot specific
Buffer:	Lyophilized from PBS with 2 % sucrose
Handling Advice:	Avoid repeat freeze-thaw cycles.
Storage:	4 °C, -20 °C
Storage Comment:	Long term: -20°C, the use of 50% glycerol is recommended if storing aliquots in -20°C for long term use (up to 1 year)  Short term (less than 1 week): 4°C. Avoid freeze-thaw cycles.



**Image 1.**