



[Go to Product page](#)

Datasheet for ABIN6738598
anti-C11orf24 antibody (AA 61-110)

1 Image

Overview

Quantity:	100 µL
Target:	C11orf24
Binding Specificity:	AA 61-110
Reactivity:	Human, Monkey
Host:	Rabbit
Clonality:	Polyclonal
Conjugate:	This C11orf24 antibody is un-conjugated
Application:	Western Blotting (WB)

Product Details

Immunogen:	Synthetic peptide located between aa61-110 of human C11orf24 (Q96F05, NP_071733). Percent identity by BLAST analysis: Human, Gorilla, Gibbon, Monkey (100%), Marmoset (85%). Type of Immunogen: Synthetic peptide
Isotype:	IgG
Specificity:	Human C11orf24
Predicted Reactivity:	Percent identity by BLAST analysis: Human (100%).
Purification:	Immunoaffinity purified

Target Details

Target:	C11orf24
---------	----------

Target Details

Alternative Name: DM4E3 / C11orf24 ([C11orf24 Products](#))

Background: Name/Gene ID: C11orf24

Synonyms: C11orf24, DM4E3, Protein DM4E3

Gene ID: 53838

NCBI Accession: [NP_071733](#)

UniProt: [Q96F05](#)

Application Details

Application Notes: Approved: WB

Usage: ELISA titer using peptide based assay: 1:62500. Western Blot: Suggested dilution at 0.5 µg/mL in 5 % skim milk / PBS buffer, and HRP conjugated anti-Rabbit IgG should be diluted in 1:50000 - 100000 as second antibody.

Comment: Target Species of Antibody: Human

Restrictions: For Research Use only

Handling

Format: Lyophilized

Reconstitution: Distilled Water.

Concentration: Lot specific

Buffer: Lyophilized from PBS with 2 % sucrose

Handling Advice: Avoid repeat freeze-thaw cycles.

Storage: 4 °C, -20 °C

Storage Comment: Long term: -20°C, the use of 50% glycerol is recommended if storing aliquots in -20°C for long term use (up to 1 year)

Short term (less than 1 week): 4°C. Avoid freeze-thaw cycles.

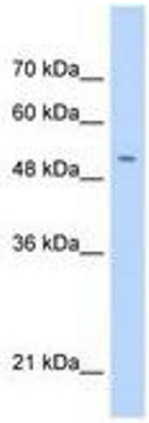


Image 1.