



[Go to Product page](#)

Datasheet for ABIN6738603
anti-RHBDF1 antibody (AA 290-339)

1 Image

Overview

Quantity:	100 µL
Target:	RHBDF1
Binding Specificity:	AA 290-339
Reactivity:	Human, Mouse, Rat, Horse, Cow, Dog, Rabbit, Guinea Pig, Monkey, Bat, Pig, Hamster
Host:	Rabbit
Clonality:	Polyclonal
Conjugate:	This RHBDF1 antibody is un-conjugated
Application:	Western Blotting (WB)

Product Details

Immunogen:	Synthetic peptide located between aa290-339 of human RHBDF1 (Q96CC6, NP_071895). Percent identity by BLAST analysis: Human, Chimpanzee, Gorilla, Gibbon, Baboon, Monkey, Galago, Marmoset, Mouse, Rat, Shrew, Hamster, Panda, Dog, Bovine, Bat, Rabbit, Horse, Pig, Opossum, Guinea pig, Armadillo (100%), Elephant (92%), Turkey, Zebra finch (85%). Type of Immunogen: Synthetic peptide
Isotype:	IgG
Specificity:	Human RHBDF1
Predicted Reactivity:	Percent identity by BLAST analysis: Human, Dog, Rabbit, Pig (100%).
Purification:	Immunoaffinity purified

Target Details

Target:	RHBDF1
Alternative Name:	RHBDF1 (RHBDF1 Products)
Background:	Name/Gene ID: RHBDF1 Synonyms: RHBDF1, EGFR-RS, Dist1, Gene-89, HDist1, IRhom1, Rhomboid 5 homolog 1, Rhomboid family 1, Rhomboid family 1 (Drosophila), C16orf8, Gene-90, Inactive rhomboid protein 1, p100hRho, Rhomboid family member 1
Gene ID:	64285
NCBI Accession:	NP_071895
UniProt:	Q96CC6
Pathways:	EGFR Signaling Pathway , Growth Factor Binding

Application Details

Application Notes:	Approved: WB Usage: ELISA titer using peptide based assay: 1:62500. Western Blot: Suggested dilution at 1 μ g/mL in 5 % skim milk / PBS buffer, and HRP conjugated anti-Rabbit IgG should be diluted in 1:50000 - 100000 as second antibody.
Comment:	Target Species of Antibody: Human
Restrictions:	For Research Use only

Handling

Format:	Lyophilized
Reconstitution:	Distilled Water.
Concentration:	Lot specific
Buffer:	Lyophilized from PBS with 2 % sucrose
Handling Advice:	Avoid repeat freeze-thaw cycles.
Storage:	4 °C,-20 °C
Storage Comment:	Long term: -20°C, the use of 50% glycerol is recommended if storing aliquots in -20°C for long term use (up to 1 year)

Handling

Short term (less than 1 week): 4°C. Avoid freeze-thaw cycles.

Images

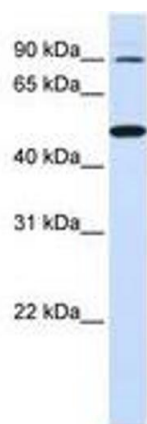


Image 1.