

Datasheet for ABIN6738609 anti-LPPR2 antibody (AA 165-214)



[Go to Product page](#)

1 Image

Overview

Quantity:	100 µL
Target:	LPPR2
Binding Specificity:	AA 165-214
Reactivity:	Human, Mouse, Rat, Cow, Dog, Horse, Monkey
Host:	Rabbit
Clonality:	Polyclonal
Conjugate:	This LPPR2 antibody is un-conjugated
Application:	Western Blotting (WB)

Product Details

Immunogen:	<p>Synthetic peptide located between aa165-214 of human LPPR2 (Q96GM1, NP_073574).</p> <p>Percent identity by BLAST analysis: Human, Gibbon, Monkey, Marmoset, Mouse, Rat, Panda, Dog, Bovine, Horse (100%), Opossum (84%).</p> <p>Type of Immunogen: Synthetic peptide</p>
Isotype:	IgG
Specificity:	Human LPPR2
Predicted Reactivity:	Percent identity by BLAST analysis: Human, Mouse, Rat, Bovine (100%).
Purification:	Immunoaffinity purified

Target Details

Target:	LPPR2
Alternative Name:	LPPR2 (LPPR2 Products)
Background:	Name/Gene ID: LPPR2 Synonyms: LPPR2, PRG-4, Plasticity related gene 4
Gene ID:	64748
NCBI Accession:	NP_073574

Application Details

Application Notes:	Approved: WB Usage: ELISA titer using peptide based assay: 1:12500. Western Blot: Suggested dilution at 0.5 µg/mL in 5 % skim milk / PBS buffer, and HRP conjugated anti-Rabbit IgG should be diluted in 1:50000 - 100000 as second antibody.
Comment:	Target Species of Antibody: Human
Restrictions:	For Research Use only

Handling

Format:	Lyophilized
Reconstitution:	Distilled Water.
Concentration:	Lot specific
Buffer:	Lyophilized from PBS with 2 % sucrose
Handling Advice:	Avoid repeat freeze-thaw cycles.
Storage:	4 °C, -20 °C
Storage Comment:	Long term: -20°C, the use of 50% glycerol is recommended if storing aliquots in -20°C for long term use (up to 1 year) Short term (less than 1 week): 4°C. Avoid freeze-thaw cycles.

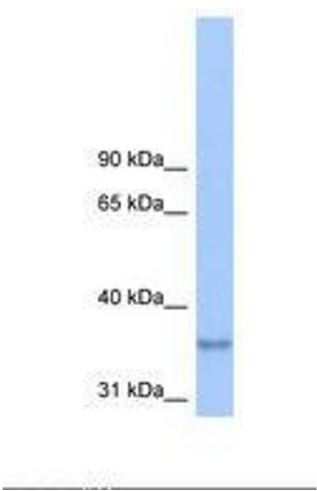


Image 1.