



Datasheet for ABIN6738613

## anti-Receptor Accessory Protein 1 antibody (AA 110-159)



[Go to Product page](#)

### 1 Image

#### Overview

Quantity:	100 µL
Target:	Receptor Accessory Protein 1 (REEP1)
Binding Specificity:	AA 110-159
Reactivity:	Mouse, Human, Rat, Horse, Rabbit, Dog, Cow, Guinea Pig, Monkey, Bat, Chicken
Host:	Rabbit
Clonality:	Polyclonal
Conjugate:	This Receptor Accessory Protein 1 antibody is un-conjugated
Application:	Western Blotting (WB)

#### Product Details

Immunogen:	Synthetic peptide located between aa110-159 of human REEP1 (Q9H902, NP_075063). Percent identity by BLAST analysis: Human, Chimpanzee, Gorilla, Gibbon, Galago, Marmoset, Mouse, Rat, Elephant, Dog, Bovine, Bat, Rabbit, Horse, Opossum, Guinea pig, Turkey, Zebra finch, Chicken (100%), Lizard (92%), Zebrafish (91%).  Type of Immunogen: Synthetic peptide
Isotype:	IgG
Specificity:	Human REEP1
Predicted Reactivity:	Percent identity by BLAST analysis: Human, Mouse, Rat, Dog, Bovine, Rabbit, Horse, Guinea pig, Chicken (100%).
Purification:	Immunoaffinity purified

## Target Details

---

Target: Receptor Accessory Protein 1 (REEP1)

Alternative Name: REEP1 ([REEP1 Products](#))

Background: Name/Gene ID: REEP1

Synonyms: REEP1, C2orf23, SPG31, Receptor accessory protein 1, HMN5B

Gene ID: 65055

NCBI Accession: [NP\\_075063](#)

UniProt: [Q9H902](#)

## Application Details

---

Application Notes: Approved: WB

Usage: ELISA titer using peptide based assay: 1:62500. Western Blot: Suggested dilution at 1  $\mu$ g/mL in 5 % skim milk / PBS buffer, and HRP conjugated anti-Rabbit IgG should be diluted in 1:50000 - 100000 as second antibody.

Comment: Target Species of Antibody: Human

Restrictions: For Research Use only

## Handling

---

Format: Lyophilized

Reconstitution: Distilled Water.

Concentration: Lot specific

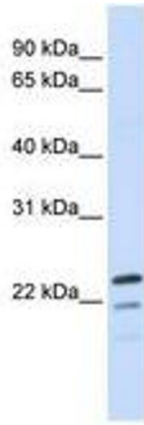
Buffer: Lyophilized from PBS with 2 % sucrose

Handling Advice: Avoid repeat freeze-thaw cycles.

Storage: 4 °C, -20 °C

Storage Comment: Long term: -20°C, the use of 50% glycerol is recommended if storing aliquots in -20°C for long term use (up to 1 year)

Short term (less than 1 week): 4°C. Avoid freeze-thaw cycles.



**Image 1.**