



Datasheet for ABIN6738616  
**anti-ADAM19 antibody (AA 73-122)**



[Go to Product page](#)

1 Image

Overview

Quantity:	100 µL
Target:	ADAM19 (Adam19)
Binding Specificity:	AA 73-122
Reactivity:	Human, Rabbit, Dog, Monkey, Bat
Host:	Rabbit
Clonality:	Polyclonal
Conjugate:	This ADAM19 antibody is un-conjugated
Application:	Western Blotting (WB)

Product Details

Immunogen:	Synthetic peptide located between aa73-122 of human ADAM19 (Q9H013). Percent identity by BLAST analysis: Human, Gorilla, Gibbon, Monkey, Marmoset, Bat (100%), Galago, Mouse, Rat, Bovine, Horse, Pig, Guinea pig (92%), Turkey, Chicken (91%), Dog (85%).  Type of Immunogen: Synthetic peptide
Isotype:	IgG
Specificity:	Human ADAM19
Predicted Reactivity:	Percent identity by BLAST analysis: Human (100%) Mouse, Rat, Bovine, Horse, Pig, Guinea pig (92%) Chicken (91%) Dog (85%).
Purification:	Immunoaffinity purified

## Target Details

---

Target: ADAM19 (Adam19)

Alternative Name: ADAM19 ([Adam19 Products](#))

Background: Name/Gene ID: ADAM19

Subfamily: Metallopeptidase M12B

Family: Protease

Synonyms: ADAM19, ADAM 19, FKSG34, Meltrin beta, Meltrin-beta, MLTNB, MADDAM

Gene ID: 8728

UniProt: [Q9H013](#)

## Application Details

---

Application Notes: Approved: WB

Usage: ELISA titer using peptide based assay: 1:62500. Western Blot: Suggested dilution at 1  $\mu$ g/mL in 5 % skim milk / PBS buffer, and HRP conjugated anti-Rabbit IgG should be diluted in 1:50000 - 100000 as second antibody.

Comment: Target Species of Antibody: Human

Restrictions: For Research Use only

## Handling

---

Format: Lyophilized

Reconstitution: Distilled Water.

Concentration: Lot specific

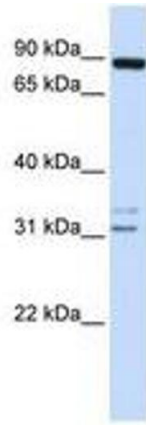
Buffer: Lyophilized from PBS with 2 % sucrose

Handling Advice: Avoid repeat freeze-thaw cycles.

Storage: 4 °C, -20 °C

Storage Comment: Long term: -20°C, the use of 50% glycerol is recommended if storing aliquots in -20°C for long term use (up to 1 year)

Short term (less than 1 week): 4°C. Avoid freeze-thaw cycles.



**Image 1.**