



[Go to Product page](#)

Datasheet for ABIN6738618
anti-CYP4F12 antibody (AA 252-301)

1 Image

Overview

Quantity:	100 µL
Target:	CYP4F12
Binding Specificity:	AA 252-301
Reactivity:	Human
Host:	Rabbit
Clonality:	Polyclonal
Conjugate:	This CYP4F12 antibody is un-conjugated
Application:	Western Blotting (WB)

Product Details

Immunogen:	Synthetic peptide located between aa252-301 of human CYP4F12 (Q9HCS2, NP_076433). Percent identity by BLAST analysis: Human, Gorilla, Marmoset (100%), Orangutan, Monkey (92%), Mouse (84%). Type of Immunogen: Synthetic peptide
Isotype:	IgG
Specificity:	Human CYP4F12
Predicted Reactivity:	Percent identity by BLAST analysis: Human (100%).
Purification:	Immunoaffinity purified

Target Details

Target:	CYP4F12
Alternative Name:	CYP4F12 (CYP4F12 Products)
Background:	Name/Gene ID: CYP4F12 Family: Cytochrome P450 Synonyms: CYP4F12, CYP11B1, Cytochrome P450 4F12, F22329_1
Gene ID:	66002
NCBI Accession:	NP_076433
UniProt:	Q9HCS2
Pathways:	Monocarboxylic Acid Catabolic Process

Application Details

Application Notes:	Approved: WB Usage: ELISA titer using peptide based assay: 1:312500. Western Blot: Suggested dilution at 1 µg/mL in 5 % skim milk / PBS buffer, and HRP conjugated anti-Rabbit IgG should be diluted in 1:50000 - 100000 as second antibody.
Comment:	Target Species of Antibody: Human
Restrictions:	For Research Use only

Handling

Format:	Lyophilized
Reconstitution:	Distilled Water.
Concentration:	Lot specific
Buffer:	Lyophilized from PBS with 2 % sucrose
Handling Advice:	Avoid repeat freeze-thaw cycles.
Storage:	4 °C, -20 °C
Storage Comment:	Long term: -20°C, the use of 50% glycerol is recommended if storing aliquots in -20°C for long term use (up to 1 year) Short term (less than 1 week): 4°C. Avoid freeze-thaw cycles.

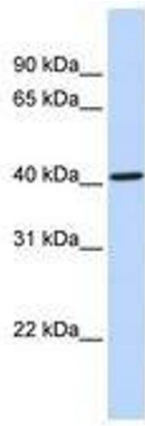


Image 1.