



[Go to Product page](#)

Datasheet for ABIN6738623
anti-TMEM38A antibody (AA 74-123)

1 Image

Overview

Quantity:	100 µL
Target:	TMEM38A
Binding Specificity:	AA 74-123
Reactivity:	Human, Rat, Horse, Pig, Rabbit, Monkey
Host:	Rabbit
Clonality:	Polyclonal
Conjugate:	This TMEM38A antibody is un-conjugated
Application:	Western Blotting (WB)

Product Details

Immunogen:	Synthetic peptide located between aa74-123 of human TMEM38A (Q9H6F2, NP_076979). Percent identity by BLAST analysis: Human, Gorilla, Gibbon, Monkey, Galago, Marmoset, Rabbit, Pig (100%), Elephant, Dog, Bovine, Bat (92%), Mouse, Rat, Horse (85%). Type of Immunogen: Synthetic peptide
Isotype:	IgG
Specificity:	Human TMEM38A
Predicted Reactivity:	Percent identity by BLAST analysis: Pig (100%) Dog (92%) Rat, Horse (85%).
Purification:	Immunoaffinity purified

Target Details

Target: TMEM38A

Alternative Name: TMEM38A ([TMEM38A Products](#))

Background: Name/Gene ID: TMEM38A

Synonyms: TMEM38A, TRICA, Transmembrane protein 38A, TRIC-A

Gene ID: 79041

NCBI Accession: [NP_076979](#)

UniProt: [Q9H6F2](#)

Application Details

Application Notes: Approved: WB

Usage: ELISA titer using peptide based assay: 1:1562500. Western Blot: Suggested dilution at 1 µg/mL in 5 % skim milk / PBS buffer, and HRP conjugated anti-Rabbit IgG should be diluted in 1:50000 - 100000 as second antibody.

Comment: Target Species of Antibody: Human

Restrictions: For Research Use only

Handling

Format: Lyophilized

Reconstitution: Distilled Water.

Concentration: Lot specific

Buffer: Lyophilized from PBS with 2 % sucrose

Handling Advice: Avoid repeat freeze-thaw cycles.

Storage: 4 °C, -20 °C

Storage Comment: Long term: -20°C, the use of 50% glycerol is recommended if storing aliquots in -20°C for long term use (up to 1 year)

Short term (less than 1 week): 4°C. Avoid freeze-thaw cycles.

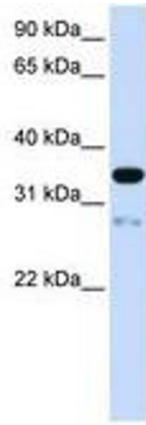


Image 1.