

Datasheet for ABIN6738630
anti-STEAP4 antibody (AA 301-350)[Go to Product page](#)

1 Image

Overview

Quantity:	100 µL
Target:	STEAP4
Binding Specificity:	AA 301-350
Reactivity:	Human, Rabbit
Host:	Rabbit
Clonality:	Polyclonal
Conjugate:	This STEAP4 antibody is un-conjugated
Application:	Western Blotting (WB)

Product Details

Immunogen:	Synthetic peptide located between aa301-350 of human STEAP4 (Q687X5, NP_078912).
	Percent identity by BLAST analysis: Human, Gorilla, Gibbon, Monkey, Rabbit (100%), Marmoset (92%).
	Type of Immunogen: Synthetic peptide
Isotype:	IgG
Specificity:	Human STEAP4
Predicted Reactivity:	Percent identity by BLAST analysis: Rabbit (100%).
Purification:	Immunoaffinity purified

Target Details

Target:	STEAP4
Alternative Name:	STEAP4 (STEAP4 Products)
Background:	Name/Gene ID: STEAP4 Synonyms: STEAP4, STEAP family member 4, Metalloreductase STEAP4, STAMP2, TIARP, TNFAIP9
Gene ID:	79689
NCBI Accession:	NP_078912
UniProt:	Q687X5
Pathways:	Transition Metal Ion Homeostasis

Application Details

Application Notes:	Approved: WB Usage: ELISA titer using peptide based assay: 1:62500. Western Blot: Suggested dilution at 1.0 µg/mL in 5 % skim milk / PBS buffer, and HRP conjugated anti-Rabbit IgG should be diluted in 1:50000 - 100000 as second antibody.
Comment:	Target Species of Antibody: Human
Restrictions:	For Research Use only

Handling

Format:	Lyophilized
Reconstitution:	Distilled Water.
Concentration:	Lot specific
Buffer:	Lyophilized from PBS with 2 % sucrose
Handling Advice:	Avoid repeat freeze-thaw cycles.
Storage:	4 °C, -20 °C
Storage Comment:	Long term: -20°C, the use of 50% glycerol is recommended if storing aliquots in -20°C for long term use (up to 1 year) Short term (less than 1 week): 4°C. Avoid freeze-thaw cycles.

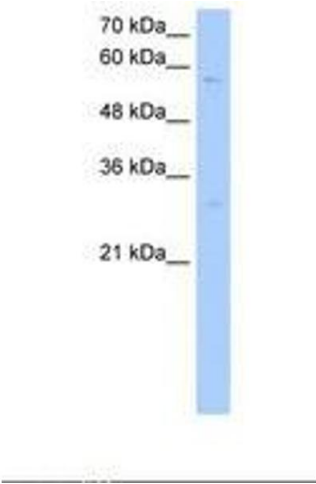


Image 1.