



## Datasheet for ABIN6738638 **anti-NIPAL2 antibody (N-Term)**



[Go to Product page](#)

### 1 Image

#### Overview

Quantity:	100 µL
Target:	NIPAL2
Binding Specificity:	N-Term
Reactivity:	Human
Host:	Rabbit
Clonality:	Polyclonal
Conjugate:	This NIPAL2 antibody is un-conjugated
Application:	Western Blotting (WB)

#### Product Details

Immunogen:	Synthetic peptide from N-Terminus of human NIPAL2 (Q9H841, NP_079035). Percent identity by BLAST analysis: Human (100%), Gorilla, Rabbit (92%), Gibbon, Marmoset (85%).  Type of Immunogen: Synthetic peptide
Isotype:	IgG
Specificity:	Human NIPAL2 / NPAL2
Predicted Reactivity:	Percent identity by BLAST analysis: Human (100%).
Purification:	Immunoaffinity purified

#### Target Details

Target:	NIPAL2
---------	--------

## Target Details

---

Alternative Name: NPAL2 / NIPAL2 ([NIPAL2 Products](#))

Background: Name/Gene ID: NIPAL2

Synonyms: NIPAL2, NIPA-like domain containing 2, NPAL2, NIPA-like protein 2

Gene ID: 79815

NCBI Accession: [NP\\_079035](#)

UniProt: [Q9H841](#)

## Application Details

---

Application Notes: Approved: WB

Usage: ELISA titer using peptide based assay: 1:12500. Western Blot: Suggested dilution at 1 µg/mL in 5 % skim milk / PBS buffer, and HRP conjugated anti-Rabbit IgG should be diluted in 1:50000 - 100000 as second antibody.

Comment: Target Species of Antibody: Human

Restrictions: For Research Use only

## Handling

---

Format: Lyophilized

Reconstitution: Distilled Water.

Concentration: Lot specific

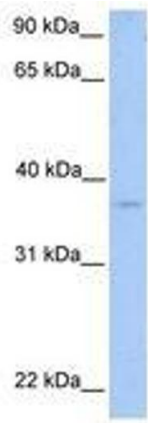
Buffer: Lyophilized from PBS with 2 % sucrose

Handling Advice: Avoid repeat freeze-thaw cycles.

Storage: 4 °C, -20 °C

Storage Comment: Long term: -20°C, the use of 50% glycerol is recommended if storing aliquots in -20°C for long term use (up to 1 year)

Short term (less than 1 week): 4°C. Avoid freeze-thaw cycles.



**Image 1.**