

Datasheet for ABIN6738648

anti-Receptor Accessory Protein 4 antibody (AA 67-116)[Go to Product page](#)**1** Image

Overview

Quantity:	100 µL
Target:	Receptor Accessory Protein 4 (REEP4)
Binding Specificity:	AA 67-116
Reactivity:	Human, Mouse, Rat, Dog, Guinea Pig, Monkey, Hamster
Host:	Rabbit
Clonality:	Polyclonal
Conjugate:	This Receptor Accessory Protein 4 antibody is un-conjugated
Application:	Western Blotting (WB)

Product Details

Immunogen:	Synthetic peptide located between aa67-116 of human REEP4 (Q9H6H4, NP_079508). Percent identity by BLAST analysis: Human, Chimpanzee, Gorilla, Orangutan, Monkey, Galago, Marmoset, Mouse, Rat, Hamster, Panda, Dog, Guinea pig (100%), Elephant, Bovine, Bat, Rabbit, Horse, Pig (92%). Type of Immunogen: Synthetic peptide
Isotype:	IgG
Specificity:	Human REEP4
Predicted Reactivity:	Percent identity by BLAST analysis: Human, Mouse, Rat, Dog (100%) Bovine, Pig (92%).
Purification:	Immunoaffinity purified

Target Details

Target:	Receptor Accessory Protein 4 (REEP4)
Alternative Name:	REEP4 (REEP4 Products)
Background:	Name/Gene ID: REEP4 Synonyms: REEP4, C8orf20, PP432, Receptor accessory protein 4
Gene ID:	80346
NCBI Accession:	NP_079508
UniProt:	Q9H6H4

Application Details

Application Notes:	Approved: WB Usage: ELISA titer using peptide based assay: 1:312500. Western Blot: Suggested dilution at 1 µg/mL in 5 % skim milk / PBS buffer, and HRP conjugated anti-Rabbit IgG should be diluted in 1:50000 - 100000 as second antibody.
Comment:	Target Species of Antibody: Human
Restrictions:	For Research Use only

Handling

Format:	Lyophilized
Reconstitution:	Distilled Water.
Concentration:	Lot specific
Buffer:	Lyophilized from PBS with 2 % sucrose
Handling Advice:	Avoid repeat freeze-thaw cycles.
Storage:	4 °C, -20 °C
Storage Comment:	Long term: -20°C, the use of 50% glycerol is recommended if storing aliquots in -20°C for long term use (up to 1 year) Short term (less than 1 week): 4°C. Avoid freeze-thaw cycles.

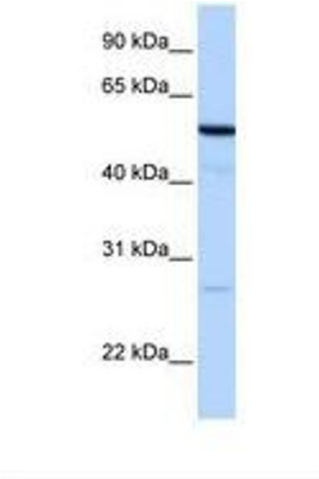


Image 1.