



[Go to Product page](#)

Datasheet for ABIN6738657
anti-FTHL17 antibody (AA 38-87)

1 Image

Overview

Quantity:	100 µL
Target:	FTHL17
Binding Specificity:	AA 38-87
Reactivity:	Human, Monkey
Host:	Rabbit
Clonality:	Polyclonal
Conjugate:	This FTHL17 antibody is un-conjugated
Application:	Western Blotting (WB)

Product Details

Immunogen:	Synthetic peptide located between aa38-87 of human FTHL17 (Q9BXU8, NP_114100). Percent identity by BLAST analysis: Human, Gorilla, Gibbon, Monkey (100%). Type of Immunogen: Synthetic peptide
Isotype:	IgG
Specificity:	Human FTHL17
Predicted Reactivity:	Percent identity by BLAST analysis: Human (100%).
Purification:	Immunoaffinity purified

Target Details

Target:	FTHL17
---------	--------

Target Details

Alternative Name:	FTHL17 (FTHL17 Products)
Background:	Name/Gene ID: FTHL17 Synonyms: FTHL17, CT38, Cancer/testis antigen 38
Gene ID:	53940
NCBI Accession:	NP_114100
UniProt:	Q9BXU8
Pathways:	Transition Metal Ion Homeostasis

Application Details

Application Notes:	Approved: WB Usage: ELISA titer using peptide based assay: 1:312500. Western Blot: Suggested dilution at 1 µg/mL in 5 % skim milk / PBS buffer, and HRP conjugated anti-Rabbit IgG should be diluted in 1:50000 - 100000 as second antibody. Not recommended for: IHC-P
Comment:	Target Species of Antibody: Human
Restrictions:	For Research Use only

Handling

Format:	Lyophilized
Reconstitution:	Distilled Water.
Concentration:	Lot specific
Buffer:	Lyophilized from PBS with 2 % sucrose
Handling Advice:	Avoid repeat freeze-thaw cycles.
Storage:	4 °C,-20 °C
Storage Comment:	Long term: -20°C, the use of 50% glycerol is recommended if storing aliquots in -20°C for long term use (up to 1 year) Short term (less than 1 week): 4°C. Avoid freeze-thaw cycles.

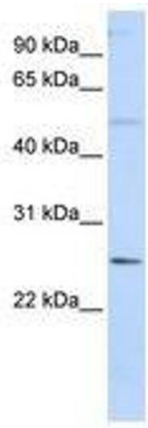


Image 1.