

Datasheet for ABIN6738661
anti-SLITRK6 antibody (AA 146-195)[Go to Product page](#)

1 Image

Overview

Quantity:	100 µL
Target:	SLITRK6
Binding Specificity:	AA 146-195
Reactivity:	Human, Mouse, Rat, Cow, Dog, Horse, Monkey
Host:	Rabbit
Clonality:	Polyclonal
Conjugate:	This SLITRK6 antibody is un-conjugated
Application:	Western Blotting (WB)

Product Details

Immunogen:	Synthetic peptide located between aa146-195 of human SLITRK6 (Q9H5Y7, NP_115605). Percent identity by BLAST analysis: Human, Chimpanzee, Gorilla, Gibbon, Monkey, Galago, Marmoset, Mouse, Rat, Elephant, Panda, Dog, Bovine, Horse, Stickleback (100%), Bat, Pig, Opossum, Turkey, Zebra finch, Chicken, Xenopus (92%), Lizard (85%). Type of Immunogen: Synthetic peptide
Isotype:	IgG
Specificity:	Human SLITRK6
Predicted Reactivity:	Percent identity by BLAST analysis: Mouse, Rat, Bovine, Horse (100%) Pig, Chicken (92%).
Purification:	Immunoaffinity purified

Target Details

Target:	SLITRK6
Alternative Name:	SLITRK6 (SLITRK6 Products)
Background:	Name/Gene ID: SLITRK6 Synonyms: SLITRK6, Slit and trk like gene 6, SLIT and NTRK-like protein 6
Gene ID:	84189
NCBI Accession:	NP_115605
UniProt:	Q9H5Y7

Application Details

Application Notes:	Approved: WB Usage: ELISA titer using peptide based assay: 1:62500. Western Blot: Suggested dilution at 1 µg/mL in 5 % skim milk / PBS buffer, and HRP conjugated anti-Rabbit IgG should be diluted in 1:50000 - 100000 as second antibody.
Comment:	Target Species of Antibody: Human
Restrictions:	For Research Use only

Handling

Format:	Lyophilized
Reconstitution:	Distilled Water.
Concentration:	Lot specific
Buffer:	Lyophilized from PBS with 2 % sucrose
Handling Advice:	Avoid repeat freeze-thaw cycles.
Storage:	4 °C, -20 °C
Storage Comment:	Long term: -20°C, the use of 50% glycerol is recommended if storing aliquots in -20°C for long term use (up to 1 year) Short term (less than 1 week): 4°C. Avoid freeze-thaw cycles.

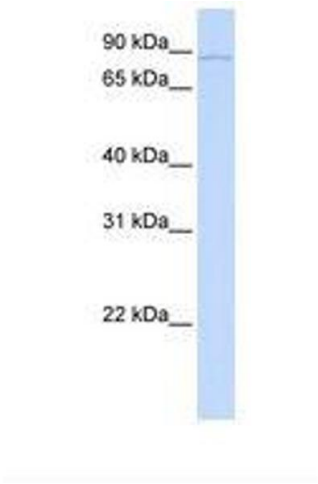


Image 1.