



Datasheet for ABIN6738662
anti-SGK196 antibody (AA 74-123)



[Go to Product page](#)

1 Image

Overview

Quantity:	100 µL
Target:	SGK196
Binding Specificity:	AA 74-123
Reactivity:	Human, Mouse, Rabbit, Monkey
Host:	Rabbit
Clonality:	Polyclonal
Conjugate:	This SGK196 antibody is un-conjugated
Application:	Western Blotting (WB)

Product Details

Immunogen:	Synthetic peptide located between aa74-123 of human SGK196 (Q9H5K3, NP_115613). Percent identity by BLAST analysis: Human, Chimpanzee, Gorilla, Monkey, Mouse, Panda, Rabbit (100%), Gibbon, Rat, Bovine, Opossum, Guinea pig, Lizard (92%), Hamster, Chicken, Platypus, Xenopus (85%). Type of Immunogen: Synthetic peptide
Isotype:	IgG
Specificity:	Human SGK196 / FLJ23356
Predicted Reactivity:	Percent identity by BLAST analysis: Human, Monkey, Mouse (100%) Rat, Bovine (92%) Chicken, Xenopus (85%).
Purification:	Immunoaffinity purified

Target Details

Target:	SGK196
Alternative Name:	POMK / SGK196 (SGK196 Products)
Background:	Name/Gene ID: POMK Subfamily: Provisional protein kinase Family: Protein Kinase Synonyms: POMK, SGK196, Sugen kinase 196
Gene ID:	84197
NCBI Accession:	NP_115613
UniProt:	Q9H5K3

Application Details

Application Notes:	Approved: WB Usage: ELISA titer using peptide based assay: 1:312500. Western Blot: Suggested dilution at 1 µg/mL in 5 % skim milk / PBS buffer, and HRP conjugated anti-Rabbit IgG should be diluted in 1:50000 - 100000 as second antibody.
Comment:	Target Species of Antibody: Human
Restrictions:	For Research Use only

Handling

Format:	Lyophilized
Reconstitution:	Distilled Water.
Concentration:	Lot specific
Buffer:	Lyophilized from PBS with 2 % sucrose
Handling Advice:	Avoid repeat freeze-thaw cycles.
Storage:	4 °C, -20 °C
Storage Comment:	Long term: -20°C, the use of 50% glycerol is recommended if storing aliquots in -20°C for long term use (up to 1 year) Short term (less than 1 week): 4°C. Avoid freeze-thaw cycles.

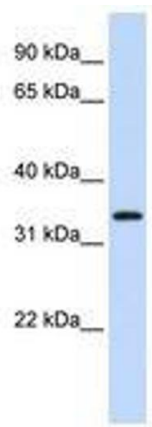


Image 1.