



[Go to Product page](#)

Datasheet for ABIN6738663
anti-TMEM117 antibody (AA 331-380)

1 Image

Overview

Quantity:	100 µL
Target:	TMEM117
Binding Specificity:	AA 331-380
Reactivity:	Human, Mouse, Rat, Cow, Dog, Guinea Pig, Horse, Rabbit, Chicken, Monkey, Pig
Host:	Rabbit
Clonality:	Polyclonal
Conjugate:	This TMEM117 antibody is un-conjugated
Application:	Western Blotting (WB)

Product Details

Immunogen:	Synthetic peptide located between aa331-380 of human TMEM117 (Q9H0C3). Percent identity by BLAST analysis: Human, Chimpanzee, Gorilla, Gibbon, Monkey, Marmoset, Mouse, Rat, Dog, Bovine, Rabbit, Horse, Pig, Guinea pig, Chicken (100%), Galago, Elephant, Zebra finch, Platypus, Lizard (92%), Opossum (85%). Type of Immunogen: Synthetic peptide
Isotype:	IgG
Specificity:	Human TMEM117
Predicted Reactivity:	Percent identity by BLAST analysis: Human, Rat, Dog, Bovine, Rabbit, Horse, Pig, Chicken (100%).
Purification:	Immunoaffinity purified

Target Details

Target:	TMEM117
Alternative Name:	TMEM117 (TMEM117 Products)
Background:	Name/Gene ID: TMEM117 Synonyms: TMEM117, Transmembrane protein 117
Gene ID:	84216
UniProt:	Q9H0C3

Application Details

Application Notes:	Approved: WB Usage: ELISA titer using peptide based assay: 1:62500. Western Blot: Suggested dilution at 1 μ g/mL in 5 % skim milk / PBS buffer, and HRP conjugated anti-Rabbit IgG should be diluted in 1:50000 - 100000 as second antibody.
Comment:	Target Species of Antibody: Human
Restrictions:	For Research Use only

Handling

Format:	Lyophilized
Reconstitution:	Distilled Water.
Concentration:	Lot specific
Buffer:	Lyophilized from PBS with 2 % sucrose
Handling Advice:	Avoid repeat freeze-thaw cycles.
Storage:	4 °C,-20 °C
Storage Comment:	Long term: -20°C, the use of 50% glycerol is recommended if storing aliquots in -20°C for long term use (up to 1 year) Short term (less than 1 week): 4°C. Avoid freeze-thaw cycles.

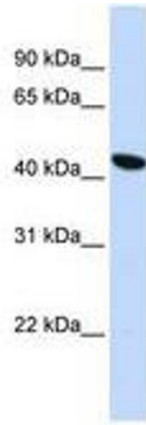


Image 1.