

Datasheet for ABIN6738670
anti-FCRLA antibody (C-Term)[Go to Product page](#)

1 Image

Overview

Quantity:	100 µL
Target:	FCRLA
Binding Specificity:	C-Term
Reactivity:	Human
Host:	Rabbit
Clonality:	Polyclonal
Conjugate:	This FCRLA antibody is un-conjugated
Application:	Western Blotting (WB)

Product Details

Immunogen:	Synthetic peptide from C-Terminus of human FCRLA (Q7L513, NP_116127). Percent identity by BLAST analysis: Human, Chimpanzee, Gorilla, Monkey (100%), Gibbon, Marmoset (92%). Type of Immunogen: Synthetic peptide
Isotype:	IgG
Specificity:	Human FCRLA
Predicted Reactivity:	Percent identity by BLAST analysis: Human (100%).
Purification:	Immunoaffinity purified

Target Details

Target:	FCRLA
---------	-------

Target Details

Alternative Name:	FCRLA (FCRLA Products)
Background:	Name/Gene ID: FCRLA Synonyms: FCRLA, Fc receptor-like A, Fc receptor-related protein X, FCRL, FCRLc1, FCRLX, Fc receptor related protein X, FCRLc2, FCRX, FCRLc, FREB, RP11-474I16.5, Fc receptor-like protein, FCRLd, FCRLM1
Gene ID:	84824
NCBI Accession:	NP_116127
UniProt:	Q7L513

Application Details

Application Notes:	Approved: WB Usage: ELISA titer using peptide based assay: 1:62500. Western Blot: Suggested dilution at 1 µg/mL in 5 % skim milk / PBS buffer, and HRP conjugated anti-Rabbit IgG should be diluted in 1:50000 - 100000 as second antibody.
Comment:	Target Species of Antibody: Human
Restrictions:	For Research Use only

Handling

Format:	Lyophilized
Reconstitution:	Distilled Water.
Concentration:	Lot specific
Buffer:	Lyophilized from PBS with 2 % sucrose
Handling Advice:	Avoid repeat freeze-thaw cycles.
Storage:	4 °C,-20 °C
Storage Comment:	Long term: -20°C, the use of 50% glycerol is recommended if storing aliquots in -20°C for long term use (up to 1 year) Short term (less than 1 week): 4°C. Avoid freeze-thaw cycles.

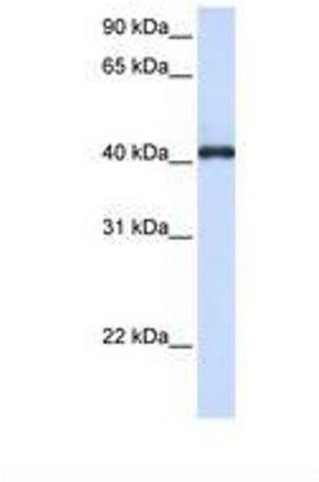


Image 1.