



[Go to Product page](#)

Datasheet for ABIN6738672
anti-ORAI1 antibody (AA 182-231)

1 Image

Overview

Quantity:	100 µL
Target:	ORAI1
Binding Specificity:	AA 182-231
Reactivity:	Human, Pig, Dog, Rabbit, Bat, Monkey
Host:	Rabbit
Clonality:	Polyclonal
Conjugate:	This ORAI1 antibody is un-conjugated
Application:	Western Blotting (WB)

Product Details

Immunogen:	Synthetic peptide located between aa182-231 of human ORAI1 (Q96D31, NP_116179). Percent identity by BLAST analysis: Human, Gorilla, Monkey, Galago, Marmoset, Elephant, Panda, Dog, Bat, Rabbit, Pig (100%), Bovine, Horse (92%). Type of Immunogen: Synthetic peptide
Isotype:	IgG
Specificity:	Human ORAI1
Predicted Reactivity:	Percent identity by BLAST analysis: Human, Dog, Rabbit, Pig (100%) Bovine, Horse (92%).
Purification:	Immunoaffinity purified

Target Details

Target:	ORAI1
Alternative Name:	TMEM142A / ORAI1 (ORAI1 Products)
Background:	Name/Gene ID: ORAI1 Synonyms: ORAI1, CRACM1, ORAT1, Protein orai-1, TMEM142A, Transmembrane protein 142A
Gene ID:	84876
NCBI Accession:	NP_116179
UniProt:	Q96D31
Pathways:	TCR Signaling , BCR Signaling

Application Details

Application Notes:	Approved: WB Usage: ELISA titer using peptide based assay: 1:1562500. Western Blot: Suggested dilution at 1 µg/mL in 5 % skim milk / PBS buffer, and HRP conjugated anti-Rabbit IgG should be diluted in 1:50000 - 100000 as second antibody. Not recommended for: IHC-P
Comment:	Target Species of Antibody: Human
Restrictions:	For Research Use only

Handling

Format:	Lyophilized
Reconstitution:	Distilled Water.
Concentration:	Lot specific
Buffer:	Lyophilized from PBS with 2 % sucrose
Handling Advice:	Avoid repeat freeze-thaw cycles.
Storage:	4 °C,-20 °C
Storage Comment:	Long term: -20°C, the use of 50% glycerol is recommended if storing aliquots in -20°C for long term use (up to 1 year)

Handling

Short term (less than 1 week): 4°C. Avoid freeze-thaw cycles.

Images

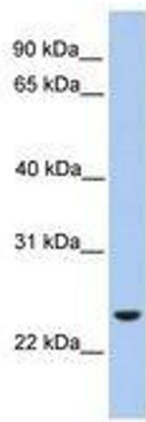


Image 1.