

## Datasheet for ABIN6738673 anti-JAM3 antibody (AA 36-85)



[Go to Product page](#)

### 1 Image

#### Overview

Quantity:	100 µL
Target:	JAM3
Binding Specificity:	AA 36-85
Reactivity:	Human, Mouse, Guinea Pig, Monkey
Host:	Rabbit
Clonality:	Polyclonal
Conjugate:	This JAM3 antibody is un-conjugated
Application:	Western Blotting (WB)

#### Product Details

Immunogen:	Synthetic peptide located between aa36-85 of human JAM3 (Q9BX67). Percent identity by BLAST analysis: Human, Chimpanzee, Gorilla, Monkey, Marmoset, Mouse, Guinea pig (100%), Galago, Rat, Elephant, Dog, Bovine, Rabbit, Horse, Pig, Opossum (92%), Bat, Platypus (85%).  Type of Immunogen: Synthetic peptide
Isotype:	IgG
Specificity:	Human JAM3 / JAMC
Predicted Reactivity:	Percent identity by BLAST analysis: Human, Mouse, Guinea pig (100%) Rat, Dog, Bovine, Rabbit, Horse, Pig (92%).
Purification:	Immunoaffinity purified

## Target Details

Target:	JAM3
Alternative Name:	JAM-C / JAM-3 ( <a href="#">JAM3 Products</a> )
Background:	Name/Gene ID: JAM3  Synonyms: JAM3, JAMC, Junctional adhesion molecule C, JAM-2, Junctional adhesion molecule 3, JAM-3, JAM-C
Gene ID:	83700
UniProt:	<a href="#">Q9BX67</a>

## Application Details

Application Notes:	Approved: WB  Usage: ELISA titer using peptide based assay: 1:312500. Western Blot: Suggested dilution at 1 µg/mL in 5 % skim milk / PBS buffer, and HRP conjugated anti-Rabbit IgG should be diluted in 1:50000 - 100000 as second antibody.
Comment:	Target Species of Antibody: Human
Restrictions:	For Research Use only

## Handling

Format:	Lyophilized
Reconstitution:	Distilled Water.
Concentration:	Lot specific
Buffer:	Lyophilized from PBS with 2 % sucrose
Handling Advice:	Avoid repeat freeze-thaw cycles.
Storage:	4 °C, -20 °C
Storage Comment:	Long term: -20°C, the use of 50% glycerol is recommended if storing aliquots in -20°C for long term use (up to 1 year) Short term (less than 1 week): 4°C. Avoid freeze-thaw cycles.

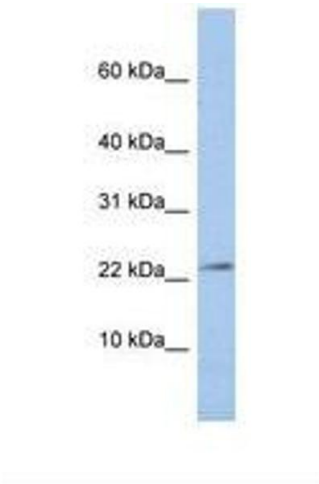


Image 1.