



Datasheet for ABIN6738676  
**anti-FIBCD1 antibody (AA 362-411)**



[Go to Product page](#)

1 Image

Overview

Quantity:	100 µL
Target:	FIBCD1
Binding Specificity:	AA 362-411
Reactivity:	Human, Mouse, Rat, Rabbit, Cow, Horse, Guinea Pig, Pig, Monkey
Host:	Rabbit
Clonality:	Polyclonal
Conjugate:	This FIBCD1 antibody is un-conjugated
Application:	Western Blotting (WB)

Product Details

Immunogen:	Synthetic peptide located between aa362-411 of human FIBCD1 (Q8N539, NP_116232). Percent identity by BLAST analysis: Human, Gorilla, Gibbon, Monkey, Galago, Marmoset, Mouse, Rat, Elephant, Panda, Bovine, Rabbit, Horse, Pig (100%), Dog, Platypus, Stickleback, Zebrafish (92%), Guinea pig (85%), Opossum, Turkey, Chicken, Xenopus (84%).  Type of Immunogen: Synthetic peptide
Isotype:	IgG
Specificity:	Human FIBCD1
Predicted Reactivity:	Percent identity by BLAST analysis: Human, Rat, Bovine, Rabbit, Horse, Pig (100%) Dog, Zebrafish (92%) Guinea pig (85%) Chicken (84%).
Purification:	Immunoaffinity purified

## Target Details

---

Target:	FIBCD1
Alternative Name:	FIBCD1 ( <a href="#">FIBCD1 Products</a> )
Background:	Name/Gene ID: FIBCD1  Synonyms: FIBCD1
Gene ID:	84929
NCBI Accession:	<a href="#">NP_116232</a>
UniProt:	<a href="#">Q8N539</a>

## Application Details

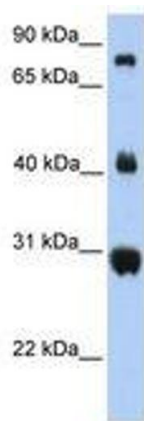
---

Application Notes:	Approved: WB  Usage: ELISA titer using peptide based assay: 1:1562500. Western Blot: Suggested dilution at 1 µg/mL in 5 % skim milk / PBS buffer, and HRP conjugated anti-Rabbit IgG should be diluted in 1:50000 - 100000 as second antibody.
Comment:	Target Species of Antibody: Human
Restrictions:	For Research Use only

## Handling

---

Format:	Lyophilized
Reconstitution:	Distilled Water.
Concentration:	Lot specific
Buffer:	Lyophilized from PBS with 2 % sucrose
Handling Advice:	Avoid repeat freeze-thaw cycles.
Storage:	4 °C, -20 °C
Storage Comment:	Long term: -20°C, the use of 50% glycerol is recommended if storing aliquots in -20°C for long term use (up to 1 year)  Short term (less than 1 week): 4°C. Avoid freeze-thaw cycles.



**Image 1.**