

Datasheet for ABIN6738687
anti-SLITRK1 antibody (AA 218-267)[Go to Product page](#)

1 Image

Overview

Quantity:	100 µL
Target:	SLITRK1
Binding Specificity:	AA 218-267
Reactivity:	Human, Rat, Mouse, Cow, Horse, Rabbit, Guinea Pig, Pig, Bat, Monkey, Chicken
Host:	Rabbit
Clonality:	Polyclonal
Conjugate:	This SLITRK1 antibody is un-conjugated
Application:	Western Blotting (WB)

Product Details

Immunogen:	Synthetic peptide located between aa218-267 of human SLITRK1 (Q96PX8, NP_443142). Percent identity by BLAST analysis: Human, Chimpanzee, Gorilla, Orangutan, Gibbon, Monkey, Marmoset, Mouse, Rat, Bovine, Bat, Rabbit, Horse, Pig, Guinea pig, Turkey, Zebra finch, Chicken, Lizard (100%), Galago, Elephant, Opossum, Xenopus (92%), Stickleback (84%). Type of Immunogen: Synthetic peptide
Isotype:	IgG
Specificity:	Human SLITRK1
Predicted Reactivity:	Percent identity by BLAST analysis: Mouse, Rat, Bovine, Rabbit, Horse, Pig, Chicken (100%).
Purification:	Immunoaffinity purified

Target Details

Target:	SLITRK1
Alternative Name:	SLITRK1 (SLITRK1 Products)
Background:	Name/Gene ID: SLITRK1 Synonyms: SLITRK1, LRRC12, KIAA1910, RP11-395N17.1, SLIT and NTRK-like protein 1, Slit and trk like gene 1, TTM
Gene ID:	114798
NCBI Accession:	NP_443142
UniProt:	Q96PX8

Application Details

Application Notes:	Approved: WB Usage: ELISA titer using peptide based assay: 1:312500. Western Blot: Suggested dilution at 1 µg/mL in 5 % skim milk / PBS buffer, and HRP conjugated anti-Rabbit IgG should be diluted in 1:50000 - 100000 as second antibody.
Comment:	Target Species of Antibody: Human
Restrictions:	For Research Use only

Handling

Format:	Lyophilized
Reconstitution:	Distilled Water.
Concentration:	Lot specific
Buffer:	Lyophilized from PBS with 2 % sucrose
Handling Advice:	Avoid repeat freeze-thaw cycles.
Storage:	4 °C,-20 °C
Storage Comment:	Long term: -20°C, the use of 50% glycerol is recommended if storing aliquots in -20°C for long term use (up to 1 year) Short term (less than 1 week): 4°C. Avoid freeze-thaw cycles.

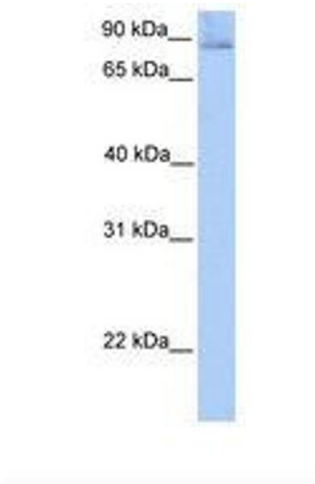


Image 1.