



## Datasheet for ABIN6738689 **anti-SLAMF6 antibody (AA 74-123)**



[Go to Product page](#)

### 1 Image

#### Overview

Quantity:	100 µL
Target:	SLAMF6
Binding Specificity:	AA 74-123
Reactivity:	Human
Host:	Rabbit
Clonality:	Polyclonal
Conjugate:	This SLAMF6 antibody is un-conjugated
Application:	Western Blotting (WB)

#### Product Details

Immunogen:	Synthetic peptide located between aa74-123 of human SLAMF6 (B2R8X8, NP_443163). Percent identity by BLAST analysis: Human (100%), Gorilla (92%).  Type of Immunogen: Synthetic peptide
Isotype:	IgG
Specificity:	Human SLAMF6
Predicted Reactivity:	Percent identity by BLAST analysis: Human (100%).
Purification:	Immunoaffinity purified

#### Target Details

Target:	SLAMF6
---------	--------

## Target Details

---

Alternative Name: SLAMF6 / NTBA ([SLAMF6 Products](#))

Background: Name/Gene ID: SLAMF6

Synonyms: SLAMF6, Activating NK receptor, CD352, CD352 antigen, NK-T-B-antigen, NTB-A, NTBA receptor, KAL1b, SF2000, SLAM family member 6, Ly108, NTBA, KALI

Gene ID: 114836

NCBI Accession: [NP\\_443163](#)

UniProt: [Q96DU3](#)

## Application Details

---

Application Notes: Approved: WB

Usage: ELISA titer using peptide based assay: 1:312500. Western Blot: Suggested dilution at 1  $\mu$ g/mL in 5 % skim milk / PBS buffer, and HRP conjugated anti-Rabbit IgG should be diluted in 1:50000 - 100000 as second antibody.

Comment: Target Species of Antibody: Human

Restrictions: For Research Use only

## Handling

---

Format: Lyophilized

Reconstitution: Distilled Water.

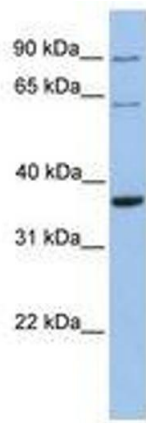
Concentration: Lot specific

Buffer: Lyophilized from PBS with 2 % sucrose

Handling Advice: Avoid repeat freeze-thaw cycles.

Storage: 4 °C, -20 °C

Storage Comment: Long term: -20°C, the use of 50% glycerol is recommended if storing aliquots in -20°C for long term use (up to 1 year)  
Short term (less than 1 week): 4°C. Avoid freeze-thaw cycles.



**Image 1.**