

Datasheet for ABIN673869
anti-Claudin 5 antibody

3 Images

[Go to Product page](#)

Overview

| | |
|--------------|--|
| Quantity: | 100 µL |
| Target: | Claudin 5 (CLDN5) |
| Reactivity: | Human, Rat, Mouse, Pig, Cow, Dog |
| Host: | Rabbit |
| Clonality: | Polyclonal |
| Conjugate: | This Claudin 5 antibody is un-conjugated |
| Application: | Western Blotting (WB) |

Product Details

| | |
|-----------------------|---|
| Immunogen: | KLH conjugated synthetic peptide derived from human claudin 5 |
| Isotype: | IgG |
| Cross-Reactivity: | Human, Rat |
| Predicted Reactivity: | Mouse,Dog,Cow,Pig,Rabbit |
| Purification: | Purified by Protein A. |

Target Details

| | |
|-------------------|--|
| Target: | Claudin 5 (CLDN5) |
| Alternative Name: | Claudin 5/CLDN5 (CLDN5 Products) |
| Background: | Optional[synonyms]: Androgen withdrawal and apoptosis induced protein RVP1 like, AWAL, BEC 1, BEC1, Claudin 5 (transmembrane protein deleted in velocardiofacial syndrome), Claudin-5, |

Target Details

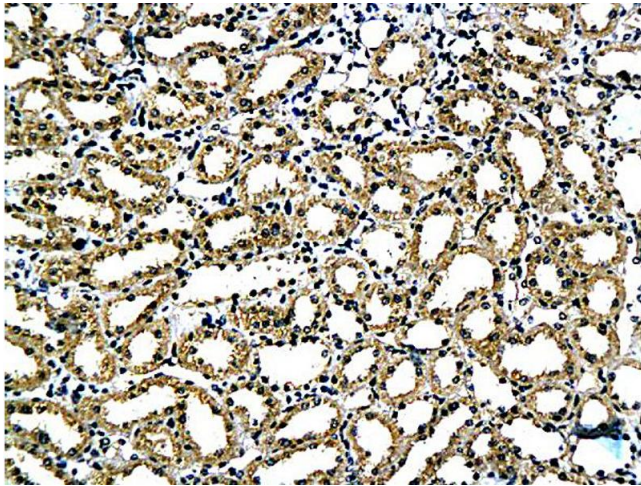
| | |
|-------------------|---|
| | Claudin5, CLD5_HUMAN, CLDN 5, CLDN5, CPETR L1, CPETRL 1, CPETRL1, TMDVCF, TMVCF, Transmembrane protein deleted in VCFS, Transmembrane protein deleted in velocardiofacial syndrome. |
| Molecular Weight: | 23kDa |
| Gene ID: | 7122 |
| UniProt: | O00501 |
| Pathways: | Hepatitis C |

Application Details

| | |
|--------------------|---|
| Application Notes: | WB(1:100-500) Optimal working dilution should be determined by the investigator. |
| Restrictions: | For Research Use only |

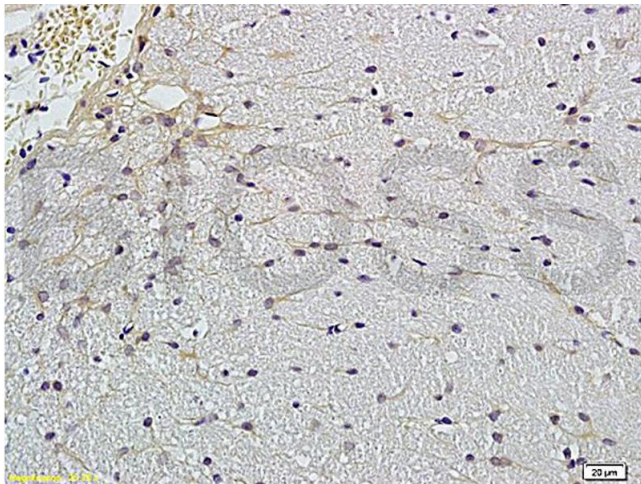
Handling

| | |
|--------------------|--|
| Format: | Liquid |
| Concentration: | 1 mg/mL |
| Buffer: | 0.01M TBS(pH 7.4) with 1 % BSA, 0.02 % Proclin300 and 50 % Glycerol. |
| Preservative: | Sodium azide |
| Precaution of Use: | This product contains sodium azide: a POISONOUS AND HAZARDOUS SUBSTANCE which should be handled by trained staff only. |
| Storage: | 4 °C,-20 °C |
| Storage Comment: | Shipped at 4°C. Store at -20°C for one year. Avoid repeated freeze/thaw cycles. |
| Expiry Date: | 12 months |



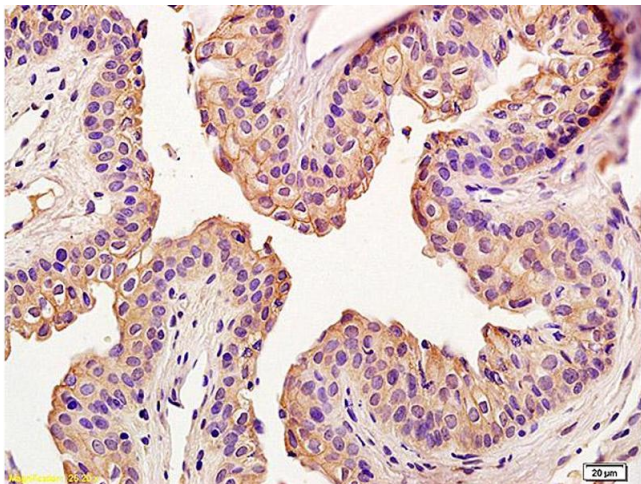
Immunohistochemistry

Image 1. Formalin-fixed and paraffin embedded rat kidney tissue labeled with Anti-Claudin 5 Polyclonal Antibody, Unconjugated (ABIN673869) followed by conjugation to the secondary antibody and DAB staining



Immunohistochemistry

Image 2. Formalin-fixed and paraffin embedded rat brain labeled with Anti-Claudin 5 Polyclonal Antibody, Unconjugated (ABIN673869) followed by conjugation to the secondary antibody and DAB staining



Immunohistochemistry

Image 3. Formalin-fixed and paraffin embedded rat penile labeled with Anti-Claudin 5 Polyclonal Antibody, Unconjugated (ABIN673869) at 1:200 followed by conjugation to the secondary antibody and DAB staining