



[Go to Product page](#)

Datasheet for ABIN6738690
anti-TMEM123 antibody (C-Term)

1 Image

Overview

Quantity:	100 µL
Target:	TMEM123
Binding Specificity:	C-Term
Reactivity:	Human, Monkey
Host:	Rabbit
Clonality:	Polyclonal
Conjugate:	This TMEM123 antibody is un-conjugated
Application:	Western Blotting (WB)

Product Details

Immunogen:	Synthetic peptide from C-Terminus of human TMEM123 (Q8N131, NP_443164). Percent identity by BLAST analysis: Human, Chimpanzee, Monkey, Marmoset (100%), Gorilla, Gibbon (92%). Type of Immunogen: Synthetic peptide
Isotype:	IgG
Specificity:	Human TMEM123
Predicted Reactivity:	Percent identity by BLAST analysis: Human (100%).
Purification:	Immunoaffinity purified

Target Details

Target:	TMEM123
Alternative Name:	TMEM123 / Porimin (TMEM123 Products)
Background:	Name/Gene ID: TMEM123 Synonyms: TMEM123, KCT-3, KCT3, PORMIN, Transmembrane protein 123, Porimin, Serine/threonine-rich receptor
Gene ID:	114908
NCBI Accession:	NP_443164
UniProt:	Q8N131
Pathways:	Regulation of Cell Size

Application Details

Application Notes:	Approved: WB Usage: ELISA titer using peptide based assay: 1:1562500. Western Blot: Suggested dilution at 1 µg/mL in 5 % skim milk / PBS buffer, and HRP conjugated anti-Rabbit IgG should be diluted in 1:50000 - 100000 as second antibody.
Comment:	Target Species of Antibody: Human
Restrictions:	For Research Use only

Handling

Format:	Lyophilized
Reconstitution:	Distilled Water.
Concentration:	Lot specific
Buffer:	Lyophilized from PBS with 2 % sucrose
Handling Advice:	Avoid repeat freeze-thaw cycles.
Storage:	4 °C, -20 °C
Storage Comment:	Long term: -20°C, the use of 50% glycerol is recommended if storing aliquots in -20°C for long term use (up to 1 year) Short term (less than 1 week): 4°C. Avoid freeze-thaw cycles.

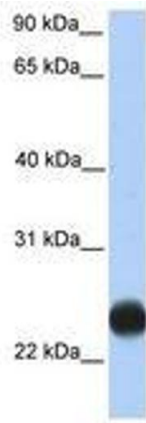


Image 1.