



[Go to Product page](#)

Datasheet for ABIN6738691
anti-SIGLEC12 antibody (AA 38-87)

1 Image

Overview

Quantity:	100 µL
Target:	SIGLEC12
Binding Specificity:	AA 38-87
Reactivity:	Human
Host:	Rabbit
Clonality:	Polyclonal
Conjugate:	This SIGLEC12 antibody is un-conjugated
Application:	Western Blotting (WB)

Product Details

Immunogen:	Synthetic peptide located between aa38-87 of human SIGLEC12 (Q96PQ1, NP_443729). Percent identity by BLAST analysis: Human (100%), Chimpanzee (92%). Type of Immunogen: Synthetic peptide
Isotype:	IgG
Specificity:	Human SIGLEC12
Predicted Reactivity:	Percent identity by BLAST analysis: Human (100%) Chimpanzee, Gorilla, Orangutan (92%).
Purification:	Immunoaffinity purified

Target Details

Target:	SIGLEC12
---------	----------

Target Details

Alternative Name: [SIGLEC12 / SIGLEC-12 \(SIGLEC12 Products\)](#)

Background: Name/Gene ID: SIGLEC12

Synonyms: SIGLEC12, Siglec-XII, SLG, Siglec-12, S2V, Siglec-L1, SIGLEC-like 1

Gene ID: 89858

NCBI Accession: [NP_443729](#)

UniProt: [Q96PQ1](#)

Application Details

Application Notes: Approved: WB

Usage: ELISA titer using peptide based assay: 1:1562500. Western Blot: Suggested dilution at 1 µg/mL in 5 % skim milk / PBS buffer, and HRP conjugated anti-Rabbit IgG should be diluted in 1:50000 - 100000 as second antibody.

Comment: Target Species of Antibody: Human

Restrictions: For Research Use only

Handling

Format: Lyophilized

Reconstitution: Distilled Water.

Concentration: Lot specific

Buffer: Lyophilized from PBS with 2 % sucrose

Handling Advice: Avoid repeat freeze-thaw cycles.

Storage: 4 °C, -20 °C

Storage Comment: Long term: -20°C, the use of 50% glycerol is recommended if storing aliquots in -20°C for long term use (up to 1 year)

Short term (less than 1 week): 4°C. Avoid freeze-thaw cycles.

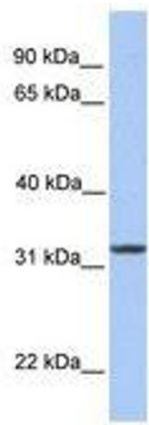


Image 1.