

## Datasheet for ABIN6738692 **anti-SIGLEC12 antibody (AA 110-159)**



[Go to Product page](#)

### 1 Image

#### Overview

Quantity:	100 µL
Target:	SIGLEC12
Binding Specificity:	AA 110-159
Reactivity:	Human
Host:	Rabbit
Clonality:	Polyclonal
Conjugate:	This SIGLEC12 antibody is un-conjugated
Application:	Western Blotting (WB)

#### Product Details

Immunogen:	Synthetic peptide located between aa110-159 of human SIGLEC12 (Q96PQ1, NP_443729). Percent identity by BLAST analysis: Human, Chimpanzee (100%).  Type of Immunogen: Synthetic peptide
Isotype:	IgG
Specificity:	Human SIGLEC12
Predicted Reactivity:	Percent identity by BLAST analysis: Human, Chimpanzee, Gorilla (100%) Orangutan (92%).
Purification:	Immunoaffinity purified

#### Target Details

Target:	SIGLEC12
---------	----------

## Target Details

---

Alternative Name:	SIGLEC12 / SIGLEC-12 ( <a href="#">SIGLEC12 Products</a> )
Background:	Name/Gene ID: SIGLEC12  Synonyms: SIGLEC12, Siglec-XII, SLG, Siglec-12, S2V, Siglec-L1, SIGLEC-like 1
Gene ID:	89858
NCBI Accession:	<a href="#">NP_443729</a>
UniProt:	<a href="#">Q96PQ1</a>

## Application Details

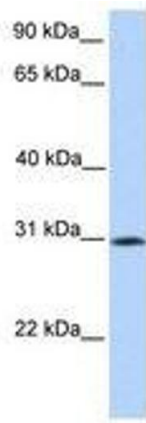
---

Application Notes:	Approved: WB  Usage: ELISA titer using peptide based assay: 1:312500. Western Blot: Suggested dilution at 1 µg/mL in 5 % skim milk / PBS buffer, and HRP conjugated anti-Rabbit IgG should be diluted in 1:50000 - 100000 as second antibody.
Comment:	Target Species of Antibody: Human
Restrictions:	For Research Use only

## Handling

---

Format:	Lyophilized
Reconstitution:	Distilled Water.
Concentration:	Lot specific
Buffer:	Lyophilized from PBS with 2 % sucrose
Handling Advice:	Avoid repeat freeze-thaw cycles.
Storage:	4 °C, -20 °C
Storage Comment:	Long term: -20°C, the use of 50% glycerol is recommended if storing aliquots in -20°C for long term use (up to 1 year)  Short term (less than 1 week): 4°C. Avoid freeze-thaw cycles.



**Image 1.**