



Datasheet for ABIN6738696  
**anti-COLEC12 antibody (AA 101-150)**



[Go to Product page](#)

1 Image

Overview

Quantity:	100 µL
Target:	COLEC12
Binding Specificity:	AA 101-150
Reactivity:	Human, Mouse, Rabbit, Dog, Cow, Monkey
Host:	Rabbit
Clonality:	Polyclonal
Conjugate:	This COLEC12 antibody is un-conjugated
Application:	Western Blotting (WB)

Product Details

Immunogen:	Synthetic peptide located between aa101-150 of human COLEC12 (Q5KU26, NP_569057). Percent identity by BLAST analysis: Human, Chimpanzee, Gorilla, Gibbon, Monkey, Galago, Marmoset, Mouse, Elephant, Dog, Bovine, Rabbit (100%), Rat, Bat, Horse, Opossum, Guinea pig, Zebra finch (92%), Turkey, Chicken, Platypus, Xenopus (85%).  Type of Immunogen: Synthetic peptide
Isotype:	IgG
Specificity:	Human COLEC12
Predicted Reactivity:	Percent identity by BLAST analysis: Dog, Rabbit (100%) Horse, Guinea pig (92%) Chicken (85%).
Purification:	Immunoaffinity purified

## Target Details

---

Target:	COLEC12
Alternative Name:	COLEC12 ( <a href="#">COLEC12 Products</a> )
Background:	Name/Gene ID: COLEC12  Synonyms: COLEC12, Collectin placenta protein 1, CL-P1, Collectin-12, HCL-P1, NSR2, SCARA4, SRCL, Collectin sub-family member 12
Gene ID:	81035
NCBI Accession:	<a href="#">NP_569057</a>
Pathways:	<a href="#">Activation of Innate immune Response</a>

## Application Details

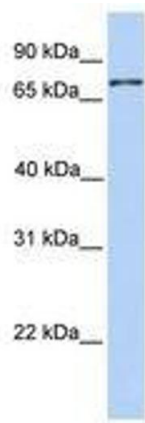
---

Application Notes:	Approved: WB  Usage: ELISA titer using peptide based assay: 1:1562500. Western Blot: Suggested dilution at 1 µg/mL in 5 % skim milk / PBS buffer, and HRP conjugated anti-Rabbit IgG should be diluted in 1:50000 - 100000 as second antibody.
Comment:	Target Species of Antibody: Human
Restrictions:	For Research Use only

## Handling

---

Format:	Lyophilized
Reconstitution:	Distilled Water.
Concentration:	Lot specific
Buffer:	Lyophilized from PBS with 2 % sucrose
Handling Advice:	Avoid repeat freeze-thaw cycles.
Storage:	4 °C,-20 °C
Storage Comment:	Long term: -20°C, the use of 50% glycerol is recommended if storing aliquots in -20°C for long term use (up to 1 year)  Short term (less than 1 week): 4°C. Avoid freeze-thaw cycles.



**Image 1.**