



[Go to Product page](#)

Datasheet for ABIN6738706
anti-EIF3H antibody (N-Term)

1 Image

Overview

Quantity:	100 µL
Target:	EIF3H
Binding Specificity:	N-Term
Reactivity:	Human, Mouse, Rat, Dog, Rabbit, Guinea Pig, Xenopus laevis
Host:	Rabbit
Clonality:	Polyclonal
Conjugate:	This EIF3H antibody is un-conjugated
Application:	Western Blotting (WB)

Product Details

Immunogen:	Synthetic peptide from N-Terminus of human EIF3H (O15372, NP_003747). Percent identity by BLAST analysis: Human, Chimpanzee, Gorilla, Gibbon, Monkey, Mouse, Rat, Xenopus (100%), Galago, Marmoset, Elephant, Bovine, Pig (92%), Dog, Rabbit, Guinea pig (85%). Type of Immunogen: Synthetic peptide
Isotype:	IgG
Specificity:	Human EIF3H / EIF3S3
Predicted Reactivity:	Percent identity by BLAST analysis: Human, Mouse, Rat (100%) Bovine, Pig (92%) Dog, Rabbit, Guinea pig (85%).
Purification:	Immunoaffinity purified

Target Details

Target:	EIF3H
Alternative Name:	EIF3H / EIF3S3 (EIF3H Products)
Background:	Name/Gene ID: EIF3H Synonyms: EIF3H, EIF-3-gamma, EIF3-gamma, EIF3-p40, EIF3 p40 subunit, EIF3S3
Gene ID:	8667
NCBI Accession:	NP_003747
UniProt:	O15372
Pathways:	Ribonucleoprotein Complex Subunit Organization

Application Details

Application Notes:	Approved: WB Usage: ELISA titer using peptide based assay: 1:12500. Western Blot: Suggested dilution at 1 µg/mL in 5 % skim milk / PBS buffer, and HRP conjugated anti-Rabbit IgG should be diluted in 1:50000 - 100000 as second antibody.
Comment:	Target Species of Antibody: Human
Restrictions:	For Research Use only

Handling

Format:	Lyophilized
Reconstitution:	Distilled Water.
Concentration:	Lot specific
Buffer:	Lyophilized from PBS with 2 % sucrose
Handling Advice:	Avoid repeat freeze-thaw cycles.
Storage:	4 °C,-20 °C
Storage Comment:	Long term: -20°C, the use of 50% glycerol is recommended if storing aliquots in -20°C for long term use (up to 1 year) Short term (less than 1 week): 4°C. Avoid freeze-thaw cycles.

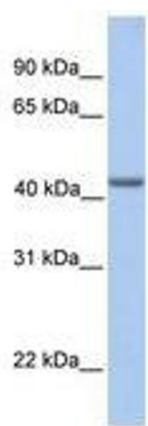


Image 1.