

Datasheet for ABIN6738710
anti-AIM2 antibody (N-Term)



[Go to Product page](#)

1 Image

Overview

Quantity:	100 µL
Target:	AIM2
Binding Specificity:	N-Term
Reactivity:	Human, Mouse, Horse, Zebrafish (Danio rerio), Monkey
Host:	Rabbit
Clonality:	Polyclonal
Conjugate:	This AIM2 antibody is un-conjugated
Application:	Western Blotting (WB)

Product Details

Immunogen:	Synthetic peptide from N-Terminus of human AIM2 (O14862, NP_004824). Percent identity by BLAST analysis: Human, Gorilla, Gibbon, Monkey, Horse, Zebrafish (100%), Galago, Marmoset (85%), Mouse (78%). Type of Immunogen: Synthetic peptide
Isotype:	IgG
Specificity:	Human AIM2
Predicted Reactivity:	Percent identity by BLAST analysis: Human, Horse (100%).
Purification:	Immunoaffinity purified

Target Details

Target:	AIM2
Alternative Name:	AIM2 (AIM2 Products)
Background:	Name/Gene ID: AIM2 Synonyms: AIM2, Absent in melanoma 2, PYHIN4
Gene ID:	9447
NCBI Accession:	NP_004824
UniProt:	O14862
Pathways:	Activation of Innate immune Response , Positive Regulation of Endopeptidase Activity , Inflammasome

Application Details

Application Notes:	Approved: WB Usage: ELISA titer using peptide based assay: 1:62500. Western Blot: Suggested dilution at 1 μ g/mL in 5 % skim milk / PBS buffer, and HRP conjugated anti-Rabbit IgG should be diluted in 1:50000 - 100000 as second antibody.
Comment:	Target Species of Antibody: Human
Restrictions:	For Research Use only

Handling

Format:	Lyophilized
Reconstitution:	Distilled Water.
Concentration:	Lot specific
Buffer:	Lyophilized from PBS with 2 % sucrose
Handling Advice:	Avoid repeat freeze-thaw cycles.
Storage:	4 °C, -20 °C
Storage Comment:	Long term: -20°C, the use of 50% glycerol is recommended if storing aliquots in -20°C for long term use (up to 1 year) Short term (less than 1 week): 4°C. Avoid freeze-thaw cycles.

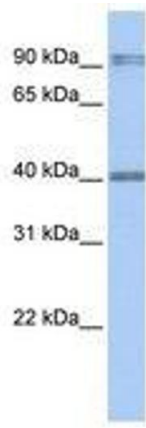


Image 1.