

Datasheet for ABIN6738711
anti-HMX2 antibody (AA 110-159)[Go to Product page](#)

1 Image

Overview

Quantity:	100 µL
Target:	HMX2
Binding Specificity:	AA 110-159
Reactivity:	Human, Mouse, Rat, Dog, Pig, Rabbit, Horse, Monkey
Host:	Rabbit
Clonality:	Polyclonal
Conjugate:	This HMX2 antibody is un-conjugated
Application:	Western Blotting (WB)

Product Details

Immunogen:	Synthetic peptide located between aa110-159 of human HMX2 (A2RU54, NP_005510). Percent identity by BLAST analysis: Human, Gorilla, Monkey, Galago, Marmoset, Mouse, Rat, Elephant, Dog, Rabbit, Horse, Pig (100%), Bovine, Guinea pig (92%). Type of Immunogen: Synthetic peptide
Isotype:	IgG
Specificity:	Human HMX2
Predicted Reactivity:	Percent identity by BLAST analysis: Human, Mouse, Rat, Dog (100%) Bovine (92%).
Purification:	Immunoaffinity purified

Target Details

Target:	HMX2
Alternative Name:	HMX2 (HMX2 Products)
Background:	Name/Gene ID: HMX2 Synonyms: HMX2, Homeobox protein HMX2, H6 family homeobox 2, Homeo box (H6 family) 2, Nkx5-2, H6L
Gene ID:	3167
NCBI Accession:	NP_005510
UniProt:	A2RU54

Application Details

Application Notes:	Approved: WB Usage: ELISA titer using peptide based assay: 1:62500. Western Blot: Suggested dilution at 1 µg/mL in 5 % skim milk / PBS buffer, and HRP conjugated anti-Rabbit IgG should be diluted in 1:50000 - 100000 as second antibody.
Comment:	Target Species of Antibody: Human
Restrictions:	For Research Use only

Handling

Format:	Lyophilized
Reconstitution:	Distilled Water.
Concentration:	Lot specific
Buffer:	Lyophilized from PBS with 2 % sucrose
Handling Advice:	Avoid repeat freeze-thaw cycles.
Storage:	4 °C,-20 °C
Storage Comment:	Long term: -20°C, the use of 50% glycerol is recommended if storing aliquots in -20°C for long term use (up to 1 year) Short term (less than 1 week): 4°C. Avoid freeze-thaw cycles.

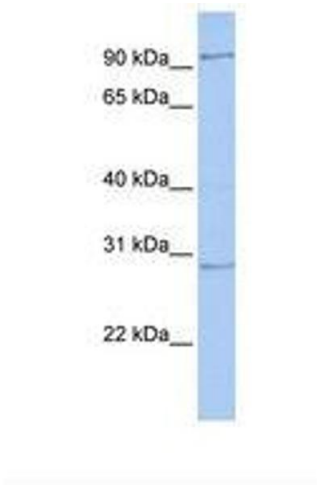


Image 1.