



[Go to Product page](#)

Datasheet for ABIN6738713  
**anti-SPRY1 antibody (AA 35-84)**

1 Image

### Overview

Quantity:	100 µL
Target:	SPRY1
Binding Specificity:	AA 35-84
Reactivity:	Human, Mouse, Dog, Horse, Rabbit, Rat, Cow, Guinea Pig, Zebrafish (Danio rerio), Pig, Bat, Hamster, Monkey
Host:	Rabbit
Clonality:	Polyclonal
Conjugate:	This SPRY1 antibody is un-conjugated
Application:	Western Blotting (WB)

### Product Details

Immunogen:	Synthetic peptide located between aa35-84 of human SPRY1 (O43609, NP_005832). Percent identity by BLAST analysis: Human, Chimpanzee, Gorilla, Gibbon, Monkey, Galago, Marmoset, Mouse, Rat, Hamster, Elephant, Panda, Dog, Bovine, Bat, Rabbit, Horse, Pig, Guinea pig, Zebra finch, Zebrafish (100%), Opossum, Turkey, Chicken, Salmon (92%), Xenopus (91%), Lizard (85%), Orangutan, Platypus (83%).  Type of Immunogen: Synthetic peptide
Isotype:	IgG
Specificity:	Human SPRY1
Predicted Reactivity:	Percent identity by BLAST analysis: Human, Mouse, Rat, Dog, Bovine (100%) Chicken (92%)

## Product Details

---

Zebrafish (84%).

Purification: Immunoaffinity purified

## Target Details

---

Target: SPRY1

Alternative Name: SPRY1 / Sprouty 1 ([SPRY1 Products](#))

Background: Name/Gene ID: SPRY1

Synonyms: SPRY1, HSPRY1, Protein sprouty homolog 1, Spry-1

Gene ID: 10252

NCBI Accession: [NP\\_005832](#)

UniProt: [O43609](#)

Pathways: [EGFR Signaling Pathway](#), [EGFR Downregulation](#)

## Application Details

---

Application Notes: Approved: WB

Usage: ELISA titer using peptide based assay: 1:1562500. Western Blot: Suggested dilution at 1 µg/mL in 5 % skim milk / PBS buffer, and HRP conjugated anti-Rabbit IgG should be diluted in 1:50000 - 100000 as second antibody.

Comment: Target Species of Antibody: Human

Restrictions: For Research Use only

## Handling

---

Format: Lyophilized

Reconstitution: Distilled Water.

Concentration: Lot specific

Buffer: Lyophilized from PBS with 2 % sucrose

Handling Advice: Avoid repeat freeze-thaw cycles.

Storage: 4 °C,-20 °C

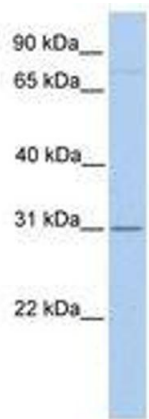
## Handling

---

Storage Comment: Long term: -20°C, the use of 50% glycerol is recommended if storing aliquots in -20°C for long term use (up to 1 year)  
Short term (less than 1 week): 4°C. Avoid freeze-thaw cycles.

## Images

---



**Image 1.**