

Datasheet for ABIN6738718
anti-C1D antibody (AA 47-96)[Go to Product page](#)

1 Image

Overview

Quantity:	100 µL
Target:	C1D
Binding Specificity:	AA 47-96
Reactivity:	Human, Mouse, Rat, Dog, Cow, Rabbit, Guinea Pig, Horse, Zebrafish (Danio rerio), Monkey, Pig, Hamster
Host:	Rabbit
Clonality:	Polyclonal
Conjugate:	This C1D antibody is un-conjugated
Application:	Western Blotting (WB)

Product Details

Immunogen:	Synthetic peptide located between aa47-96 of human C1D (Q13901, NP_006324). Percent identity by BLAST analysis: Human, Chimpanzee, Gorilla, Orangutan, Gibbon, Monkey, Galago, Marmoset, Mouse, Rat, Hamster, Elephant, Dog, Bovine, Rabbit, Horse, Pig, Opossum, Guinea pig, Platypus (100%), Turkey, Zebra finch, Chicken, Lizard (92%), Xenopus, Zebrafish (85%). Type of Immunogen: Synthetic peptide
Isotype:	IgG
Specificity:	Human C1D
Predicted Reactivity:	Percent identity by BLAST analysis: Human, Mouse, Rat, Dog, Bovine, Pig (100%) Chicken (92%) Xenopus, Zebrafish (85%).

Product Details

Purification: Immunoaffinity purified

Target Details

Target: C1D

Alternative Name: C1D ([C1D Products](#))

Background: Name/Gene ID: C1D

Synonyms: C1D, C1D DNA-binding protein, HC1D, Nuclear DNA-binding protein, SUNCOR, SUN-CoR

Gene ID: 10438

NCBI Accession: [NP_006324](#)

UniProt: [Q13901](#)

Application Details

Application Notes: Approved: WB

Usage: ELISA titer using peptide based assay: 1:62500. Western Blot: Suggested dilution at 1 µg/mL in 5 % skim milk / PBS buffer, and HRP conjugated anti-Rabbit IgG should be diluted in 1:50000 - 100000 as second antibody.

Comment: Target Species of Antibody: Human

Restrictions: For Research Use only

Handling

Format: Lyophilized

Reconstitution: Distilled Water.

Concentration: Lot specific

Buffer: Lyophilized from PBS with 2 % sucrose

Handling Advice: Avoid repeat freeze-thaw cycles.

Storage: 4 °C, -20 °C

Storage Comment: Long term: -20°C, the use of 50% glycerol is recommended if storing aliquots in -20°C for long

Handling

term use (up to 1 year)

Short term (less than 1 week): 4°C. Avoid freeze-thaw cycles.

Images

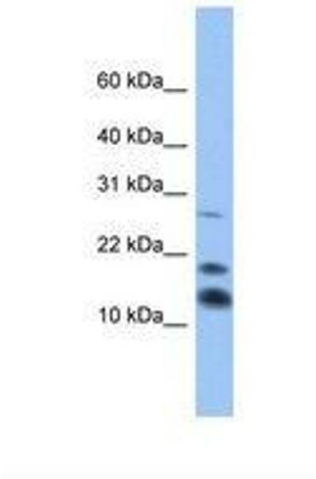


Image 1.