



[Go to Product page](#)

Datasheet for ABIN6738719  
**anti-ZNHIT1 antibody (N-Term)**

1 Image

Overview

Quantity:	100 µL
Target:	ZNHIT1
Binding Specificity:	N-Term
Reactivity:	Human, Mouse, Cow, Dog, Zebrafish (Danio rerio), Horse, Rabbit, Monkey
Host:	Rabbit
Clonality:	Polyclonal
Conjugate:	This ZNHIT1 antibody is un-conjugated
Application:	Western Blotting (WB)

Product Details

Immunogen:	Synthetic peptide from N-Terminus of human ZNHIT1 (O43257, NP_006340). Percent identity by BLAST analysis: Human, Chimpanzee, Gorilla, Gibbon, Monkey, Marmoset, Panda, Dog, Bovine, Rabbit, Horse (100%), Rat, Hamster, Opossum, Guinea pig (92%), Mouse, Zebrafish (85%).  Type of Immunogen: Synthetic peptide
Isotype:	IgG
Specificity:	Human ZNHIT1
Predicted Reactivity:	Percent identity by BLAST analysis: Dog (100%) Guinea pig (92%) Mouse, Zebrafish (85%).
Purification:	Immunoaffinity purified

## Target Details

---

Target:	ZNHIT1
Alternative Name:	ZNHIT1 ( <a href="#">ZNHIT1 Products</a> )
Background:	Name/Gene ID: ZNHIT1  Synonyms: ZNHIT1, CGBP1, Cyclin-G1-binding protein 1, p18Hamlet, Zinc finger, HIT type 1, CG1I, H_DJ0747G18.14, p18 Hamlet, ZNFN4A1
Gene ID:	10467
NCBI Accession:	<a href="#">NP_006340</a>
UniProt:	<a href="#">O43257</a>

## Application Details

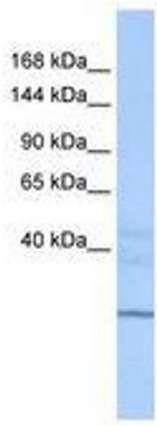
---

Application Notes:	Approved: WB  Usage: ELISA titer using peptide based assay: 1:312500. Western Blot: Suggested dilution at 1 $\mu$ g/mL in 5 % skim milk / PBS buffer, and HRP conjugated anti-Rabbit IgG should be diluted in 1:50000 - 100000 as second antibody.
Comment:	Target Species of Antibody: Human
Restrictions:	For Research Use only

## Handling

---

Format:	Lyophilized
Reconstitution:	Distilled Water.
Concentration:	Lot specific
Buffer:	Lyophilized from PBS with 2 % sucrose
Handling Advice:	Avoid repeat freeze-thaw cycles.
Storage:	4 °C,-20 °C
Storage Comment:	Long term: -20°C, the use of 50% glycerol is recommended if storing aliquots in -20°C for long term use (up to 1 year)  Short term (less than 1 week): 4°C. Avoid freeze-thaw cycles.



**Image 1.**