



[Go to Product page](#)

Datasheet for ABIN6738731
anti-XAB2 antibody (C-Term)

1 Image

Overview

Quantity:	100 µL
Target:	XAB2
Binding Specificity:	C-Term
Reactivity:	Human, Mouse, Rat, Rabbit, Monkey
Host:	Rabbit
Clonality:	Polyclonal
Conjugate:	This XAB2 antibody is un-conjugated
Application:	Western Blotting (WB)

Product Details

Immunogen:	Synthetic peptide from C-Terminus of human XAB2 (Q9HCS7, NP_064581). Percent identity by BLAST analysis: Human, Chimpanzee, Gorilla, Monkey, Marmoset, Mouse, Rat, Rabbit (100%), Galago, Hamster, Elephant, Dog, Bovine, Pig, Guinea pig (92%), Drosophila (84%). Type of Immunogen: Synthetic peptide
Isotype:	IgG
Specificity:	Human XAB2
Predicted Reactivity:	Percent identity by BLAST analysis: Human, Mouse, Rabbit (100%) Dog, Bovine, Pig (92%).
Purification:	Immunoaffinity purified

Target Details

Target:	XAB2
Alternative Name:	XAB2 / HCNP (XAB2 Products)
Background:	Name/Gene ID: XAB2 Synonyms: XAB2, HCNP, KIAA1177, HCRN, NTC90, Pre-mRNA-splicing factor SYF1, Protein HCNP, XPA binding protein 2, SYF1, XPA-binding protein 2, Crn-related protein kim1
Gene ID:	56949
NCBI Accession:	NP_064581
UniProt:	Q9HCS7

Application Details

Application Notes:	Approved: WB Usage: ELISA titer using peptide based assay: 1:62500. Western Blot: Suggested dilution at 1 μ g/mL in 5 % skim milk / PBS buffer, and HRP conjugated anti-Rabbit IgG should be diluted in 1:50000 - 100000 as second antibody.
Comment:	Target Species of Antibody: Human
Restrictions:	For Research Use only

Handling

Format:	Lyophilized
Reconstitution:	Distilled Water.
Concentration:	Lot specific
Buffer:	Lyophilized from PBS with 2 % sucrose
Handling Advice:	Avoid repeat freeze-thaw cycles.
Storage:	4 °C,-20 °C
Storage Comment:	Long term: -20°C, the use of 50% glycerol is recommended if storing aliquots in -20°C for long term use (up to 1 year) Short term (less than 1 week): 4°C. Avoid freeze-thaw cycles.

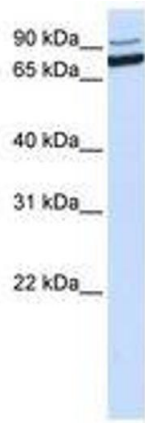


Image 1.