



## Datasheet for ABIN6738738 anti-ANKRA2 antibody (C-Term)



[Go to Product page](#)

### 1 Image

#### Overview

Quantity:	100 µL
Target:	ANKRA2
Binding Specificity:	C-Term
Reactivity:	Human, Mouse, Rat, Cow, Dog, Guinea Pig, Horse, Rabbit, Xenopus laevis, Bat, Monkey, Pig
Host:	Rabbit
Clonality:	Polyclonal
Conjugate:	This ANKRA2 antibody is un-conjugated
Application:	Western Blotting (WB)

#### Product Details

Immunogen:	Synthetic peptide from C-Terminus of human ANKRA2 (Q9H9E1, NP_075526). Percent identity by BLAST analysis: Human, Chimpanzee, Gorilla, Orangutan, Gibbon, Monkey, Marmoset, Mouse, Rat, Panda, Dog, Bovine, Bat, Rabbit, Horse, Pig, Opossum, Guinea pig, Lizard, Xenopus (100%), Galago, Elephant, Zebra finch, Chicken, Platypus (92%), Stickleback (84%).  Type of Immunogen: Synthetic peptide
Isotype:	IgG
Specificity:	Human ANKRA2
Predicted Reactivity:	Percent identity by BLAST analysis: Mouse, Rat, Dog, Rabbit, Xenopus (100%) Chicken (92%).
Purification:	Immunoaffinity purified

## Target Details

---

Target:	ANKRA2
Alternative Name:	ANKRA2 / ANKRA ( <a href="#">ANKRA2 Products</a> )
Background:	Name/Gene ID: ANKRA2  Synonyms: ANKRA2, ANKRA, RFXANK-like protein 2
Gene ID:	57763
NCBI Accession:	<a href="#">NP_075526</a>
UniProt:	<a href="#">Q9H9E1</a>

## Application Details

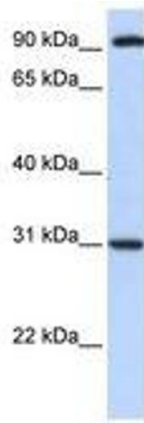
---

Application Notes:	Approved: WB  Usage: ELISA titer using peptide based assay: 1:62500. Western Blot: Suggested dilution at 1 $\mu$ g/mL in 5 % skim milk / PBS buffer, and HRP conjugated anti-Rabbit IgG should be diluted in 1:50000 - 100000 as second antibody.
Comment:	Target Species of Antibody: Human
Restrictions:	For Research Use only

## Handling

---

Format:	Lyophilized
Reconstitution:	Distilled Water.
Concentration:	Lot specific
Buffer:	Lyophilized from PBS with 2 % sucrose
Handling Advice:	Avoid repeat freeze-thaw cycles.
Storage:	4 °C, -20 °C
Storage Comment:	Long term: -20°C, the use of 50% glycerol is recommended if storing aliquots in -20°C for long term use (up to 1 year)  Short term (less than 1 week): 4°C. Avoid freeze-thaw cycles.



**Image 1.**