



[Go to Product page](#)

Datasheet for ABIN6738740
anti-ZNF385D antibody (AA 110-159)

1 Image

Overview

Quantity:	100 µL
Target:	ZNF385D
Binding Specificity:	AA 110-159
Reactivity:	Human
Host:	Rabbit
Clonality:	Polyclonal
Conjugate:	This ZNF385D antibody is un-conjugated
Application:	Western Blotting (WB)

Product Details

Immunogen: Synthetic peptide located between aa110-159 of human ZNF385D (Q9H6B1, NP_078973).
Percent identity by BLAST analysis: Human, Chimpanzee, Gorilla, Gibbon, Monkey (100%), Galago, Marmoset, Panda, Dog, Bat, Rabbit, Horse, Pig (92%), Zebra finch (91%), Opossum, Chicken (85%).

Type of Immunogen: Synthetic peptide

Isotype:	IgG
Specificity:	Human ZNF385D / ZNF659
Predicted Reactivity:	Percent identity by BLAST analysis: Dog, Rabbit, Horse, Pig (92%) Chicken (85%).
Purification:	Immunoaffinity purified

Target Details

Target: ZNF385D

Alternative Name: ZNF659 / ZNF385D ([ZNF385D Products](#))

Background: Name/Gene ID: ZNF385D
Family: Zinc Finger

Synonyms: ZNF385D, ZNF659, Zinc finger protein 385D, Zinc finger protein 659

Gene ID: 79750

NCBI Accession: [NP_078973](#)

UniProt: [Q9H6B1](#)

Application Details

Application Notes: Approved: WB

Usage: ELISA titer using peptide based assay: 1:312500. Western Blot: Suggested dilution at 1 μ g/mL in 5 % skim milk / PBS buffer, and HRP conjugated anti-Rabbit IgG should be diluted in 1:50000 - 100000 as second antibody.

Comment: Target Species of Antibody: Human

Restrictions: For Research Use only

Handling

Format: Lyophilized

Reconstitution: Distilled Water.

Concentration: Lot specific

Buffer: Lyophilized from PBS with 2 % sucrose

Handling Advice: Avoid repeat freeze-thaw cycles.

Storage: 4 °C, -20 °C

Storage Comment: Long term: -20°C, the use of 50% glycerol is recommended if storing aliquots in -20°C for long term use (up to 1 year)
Short term (less than 1 week): 4°C. Avoid freeze-thaw cycles.

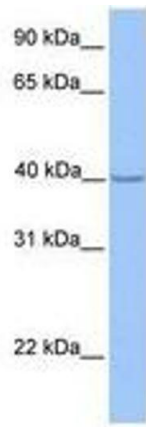


Image 1.