



Datasheet for ABIN6738757
anti-CCDC19 antibody (N-Term)



[Go to Product page](#)

1 Image

Overview

Quantity:	100 µL
Target:	CCDC19
Binding Specificity:	N-Term
Reactivity:	Human, Dog, Horse, Cow, Guinea Pig, Monkey, Pig
Host:	Rabbit
Clonality:	Polyclonal
Conjugate:	This CCDC19 antibody is un-conjugated
Application:	Western Blotting (WB)

Product Details

Immunogen:	Synthetic peptide from N-Terminus of human CCDC19 (Q5VU18, NP_036469). Percent identity by BLAST analysis: Human, Chimpanzee, Gibbon, Monkey, Marmoset (100%), Dog, Bovine, Horse, Pig, Opossum, Guinea pig (84%). Type of Immunogen: Synthetic peptide
Isotype:	IgG
Specificity:	Human CCDC19
Predicted Reactivity:	Percent identity by BLAST analysis: Dog, Bovine, Horse, Pig, Guinea pig (84%).
Purification:	Immunoaffinity purified

Target Details

Target:	CCDC19
Alternative Name:	CFAP45 / CCDC19 (CCDC19 Products)
Background:	Name/Gene ID: CFAP45 Synonyms: CFAP45, CCDC19, NESG1, RP11-190A12.6
Gene ID:	25790
NCBI Accession:	NP_036469
UniProt:	Q9UL16

Application Details

Application Notes:	Approved: WB Usage: ELISA titer using peptide based assay: 1:62500. Western Blot: Suggested dilution at 1 μ g/mL in 5 % skim milk / PBS buffer, and HRP conjugated anti-Rabbit IgG should be diluted in 1:50000 - 100000 as second antibody.
Comment:	Target Species of Antibody: Human
Restrictions:	For Research Use only

Handling

Format:	Lyophilized
Reconstitution:	Distilled Water.
Concentration:	Lot specific
Buffer:	Lyophilized from PBS with 2 % sucrose
Handling Advice:	Avoid repeat freeze-thaw cycles.
Storage:	4 °C, -20 °C
Storage Comment:	Long term: -20°C, the use of 50% glycerol is recommended if storing aliquots in -20°C for long term use (up to 1 year) Short term (less than 1 week): 4°C. Avoid freeze-thaw cycles.

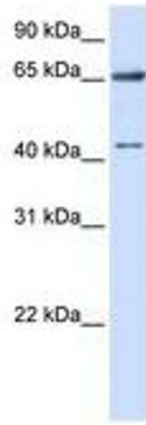


Image 1.