



[Go to Product page](#)

Datasheet for ABIN6738763

anti-Aspartate beta Hydroxylase antibody (N-Term)

1 Image

Overview

Quantity:	100 µL
Target:	Aspartate beta Hydroxylase (ASPH)
Binding Specificity:	N-Term
Reactivity:	Human, Rat, Dog, Cow, Monkey
Host:	Rabbit
Clonality:	Polyclonal
Conjugate:	This Aspartate beta Hydroxylase antibody is un-conjugated
Application:	Western Blotting (WB)

Product Details

Immunogen:	Synthetic peptide from N-Terminus of human ASPH (Q12797, NP_064549). Percent identity by BLAST analysis: Human, Gorilla, Orangutan, Gibbon, Monkey, Marmoset, Dog (100%), Elephant, Bat (92%), Mouse (91%), Rat, Bovine (85%). Type of Immunogen: Synthetic peptide
Isotype:	IgG
Specificity:	Human ASPH
Predicted Reactivity:	Percent identity by BLAST analysis: Human, Dog (100%) Mouse (91%) Rat, Bovine (85%).
Purification:	Immunoaffinity purified

Target Details

Target:	Aspartate beta Hydroxylase (ASPH)
Alternative Name:	Junctin / ASPH (ASPH Products)
Background:	Name/Gene ID: ASPH Synonyms: ASPH, A beta H-J-J, AAH, ASP beta-hydroxylase, BAH, Aspartate beta-hydroxylase, CASQ2BP1, Cardiac junctin, HAAH, Humbug, JCTN, Junctate, Junctin
Gene ID:	444
NCBI Accession:	NP_064549
UniProt:	Q12797
Pathways:	Positive Regulation of Endopeptidase Activity

Application Details

Application Notes:	Approved: WB Usage: ELISA titer using peptide based assay: 1:62500. Western Blot: Suggested dilution at 0.5 µg/mL in 5 % skim milk / PBS buffer, and HRP conjugated anti-Rabbit IgG should be diluted in 1:50000 - 100000 as second antibody.
Comment:	Target Species of Antibody: Human
Restrictions:	For Research Use only

Handling

Format:	Lyophilized
Reconstitution:	Distilled Water.
Concentration:	Lot specific
Buffer:	Lyophilized from PBS with 2 % sucrose
Handling Advice:	Avoid repeat freeze-thaw cycles.
Storage:	4 °C, -20 °C
Storage Comment:	Long term: -20°C, the use of 50% glycerol is recommended if storing aliquots in -20°C for long term use (up to 1 year) Short term (less than 1 week): 4°C. Avoid freeze-thaw cycles.

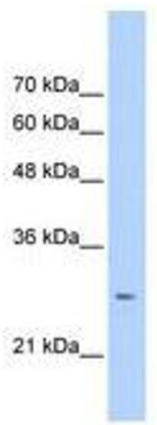


Image 1.