

Datasheet for ABIN6738764
anti-Junctophilin 2 antibody (AA 408-457)[Go to Product page](#)

1 Image

Overview

Quantity:	100 µL
Target:	Junctophilin 2 (JPH2)
Binding Specificity:	AA 408-457
Reactivity:	Human, Mouse, Rat, Cow, Dog, Horse, Monkey, Pig
Host:	Rabbit
Clonality:	Polyclonal
Conjugate:	This Junctophilin 2 antibody is un-conjugated
Application:	Western Blotting (WB)

Product Details

Immunogen:	Synthetic peptide located between aa408-457 of human JPH2 (Q9BR39, NP_065166). Percent identity by BLAST analysis: Human, Gorilla, Gibbon, Monkey, Galago, Marmoset, Mouse, Rat, Elephant, Panda, Dog, Bovine, Horse, Pig (100%), Rabbit (92%), Opossum, Turkey (85%). Type of Immunogen: Synthetic peptide
Isotype:	IgG
Specificity:	Human JPH2
Predicted Reactivity:	Percent identity by BLAST analysis: Human, Mouse, Rat, Dog, Bovine, Horse, Pig (100%) Rabbit (92%).
Purification:	Immunoaffinity purified

Target Details

Target:	Junctophilin 2 (JPH2)
Alternative Name:	Junctophilin 2 / JPH2 (JPH2 Products)
Background:	Name/Gene ID: JPH2 Synonyms: JPH2, JP-2, JP2, Junctophilin 2, CMH17, Junctophilin type 2, Junctophilin-2
Gene ID:	57158
NCBI Accession:	NP_065166
UniProt:	Q9BR39

Application Details

Application Notes:	Approved: WB Usage: ELISA titer using peptide based assay: 1:312500. Western Blot: Suggested dilution at 1 µg/mL in 5 % skim milk / PBS buffer, and HRP conjugated anti-Rabbit IgG should be diluted in 1:50000 - 100000 as second antibody. Not recommended for: IHC-P
Comment:	Target Species of Antibody: Human
Restrictions:	For Research Use only

Handling

Format:	Lyophilized
Reconstitution:	Distilled Water.
Concentration:	Lot specific
Buffer:	Lyophilized from PBS with 2 % sucrose
Handling Advice:	Avoid repeat freeze-thaw cycles.
Storage:	4 °C, -20 °C
Storage Comment:	Long term: -20°C, the use of 50% glycerol is recommended if storing aliquots in -20°C for long term use (up to 1 year) Short term (less than 1 week): 4°C. Avoid freeze-thaw cycles.

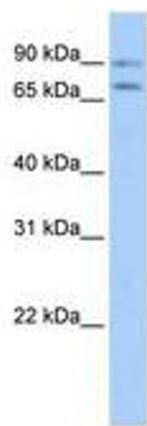


Image 1.