



Datasheet for ABIN6738776
anti-NUFIP2 antibody (AA 186-235)



[Go to Product page](#)

1 Image

Overview

Quantity:	100 µL
Target:	NUFIP2
Binding Specificity:	AA 186-235
Reactivity:	Mouse, Human, Rat, Cow, Dog, Guinea Pig, Horse, Rabbit, Pig, Bat, Chicken, Monkey
Host:	Rabbit
Clonality:	Polyclonal
Conjugate:	This NUFIP2 antibody is un-conjugated
Application:	Western Blotting (WB)

Product Details

Immunogen:	Synthetic peptide located between aa186-235 of human NUFIP2 (Q7Z417, NP_065823). Percent identity by BLAST analysis: Human, Chimpanzee, Gorilla, Gibbon, Monkey, Galago, Marmoset, Mouse, Rat, Elephant, Dog, Bovine, Bat, Rabbit, Horse, Pig, Opossum, Guinea pig, Turkey, Chicken, Platypus (100%), Xenopus, Stickleback (92%). Type of Immunogen: Synthetic peptide
Isotype:	IgG
Specificity:	Human NUFIP2
Predicted Reactivity:	Percent identity by BLAST analysis: Human, Dog, Bovine, Rabbit, Horse, Pig, Guinea pig, Chicken (100%) Xenopus (92%).
Purification:	Immunoaffinity purified

Target Details

Target:	NUFIP2
Alternative Name:	PIG1 / NUFIP2 (NUFIP2 Products)
Background:	Name/Gene ID: NUFIP2 Synonyms: NUFIP2, 82-kD FMRP Interacting Protein, 182-FIP, 82-FIP, FMRP-interacting protein 2, FIP-82, PIG1, KIAA1321, Proliferation-inducing gene 1
Gene ID:	57532
NCBI Accession:	NP_065823
UniProt:	Q7Z417

Application Details

Application Notes:	Approved: WB Usage: ELISA titer using peptide based assay: 1:312500. Western Blot: Suggested dilution at 0.5 µg/mL in 5 % skim milk / PBS buffer, and HRP conjugated anti-Rabbit IgG should be diluted in 1:50000 - 100000 as second antibody.
Comment:	Target Species of Antibody: Human
Restrictions:	For Research Use only

Handling

Format:	Lyophilized
Reconstitution:	Distilled Water.
Concentration:	Lot specific
Buffer:	Lyophilized from PBS with 2 % sucrose
Handling Advice:	Avoid repeat freeze-thaw cycles.
Storage:	4 °C,-20 °C
Storage Comment:	Long term: -20°C, the use of 50% glycerol is recommended if storing aliquots in -20°C for long term use (up to 1 year) Short term (less than 1 week): 4°C. Avoid freeze-thaw cycles.

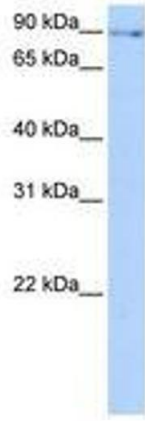


Image 1.