

Datasheet for ABIN6738789
anti-CPN2 antibody (AA 61-110)[Go to Product page](#)

1 Image

Overview

Quantity:	100 µL
Target:	CPN2
Binding Specificity:	AA 61-110
Reactivity:	Human, Rat, Hamster, Monkey
Host:	Rabbit
Clonality:	Polyclonal
Conjugate:	This CPN2 antibody is un-conjugated
Application:	Western Blotting (WB)

Product Details

Immunogen:	Synthetic peptide located between aa61-110 of human CPN2 (P22792, NP_001073982). Percent identity by BLAST analysis: Human, Chimpanzee, Gorilla, Orangutan, Monkey, Rat, Hamster (100%), Platypus (91%), Mouse, Bovine (90%), Galago, Panda, Horse (85%). Type of Immunogen: Synthetic peptide
Isotype:	IgG
Specificity:	Human CPN2
Predicted Reactivity:	Percent identity by BLAST analysis: Human, Rat (100%) Mouse, Bovine (90%).
Purification:	Immunoaffinity purified

Target Details

Target:	CPN2
Alternative Name:	CPN2 / ACBP (CPN2 Products)
Background:	Name/Gene ID: CPN2 Family: Exopeptidase Synonyms: CPN2, ACBP, Carboxypeptidase N subunit 2, Carboxypeptidase n 83 kd chain
Gene ID:	1370
NCBI Accession:	NP_001073982
UniProt:	P22792

Application Details

Application Notes:	Approved: WB Usage: ELISA titer using peptide based assay: 1:62500. Western Blot: Suggested dilution at 0.5 µg/mL in 5 % skim milk / PBS buffer, and HRP conjugated anti-Rabbit IgG should be diluted in 1:50000 - 100000 as second antibody.
Comment:	Target Species of Antibody: Human
Restrictions:	For Research Use only

Handling

Format:	Lyophilized
Reconstitution:	Distilled Water.
Concentration:	Lot specific
Buffer:	Lyophilized from PBS with 2 % sucrose
Handling Advice:	Avoid repeat freeze-thaw cycles.
Storage:	4 °C,-20 °C
Storage Comment:	Long term: -20°C, the use of 50% glycerol is recommended if storing aliquots in -20°C for long term use (up to 1 year) Short term (less than 1 week): 4°C. Avoid freeze-thaw cycles.

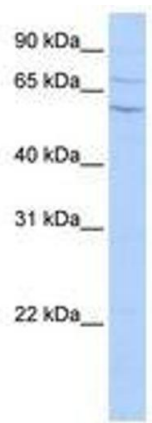


Image 1.